



Financial Results For The Second Quarter Ended June 29th 2025

Pilgrim's Pride Corporation
(NASDAQ: PPC)

Cautionary Notes and Forward-Looking Statements

- Statements contained in this press release that state the intentions, plans, hopes, beliefs, anticipations, expectations or predictions of the future of Pilgrim's Pride Corporation and its management are considered forward-looking statements. Without limiting the foregoing, words such as "anticipates," "believes," "estimates," "expects," "intends," "may," "plans," "projects," "should," "targets," "will" and the negative thereof and similar words and expressions are intended to identify forward-looking statements. It is important to note that actual results could differ materially from those projected in such forward-looking statements. Factors that could cause actual results to differ materially from those projected in such forward-looking statements include: matters affecting the poultry industry generally; the ability to execute the Company's business plan to achieve desired cost savings and profitability; future pricing for feed ingredients and the Company's products; outbreaks of avian influenza or other diseases, either in Pilgrim's Pride's flocks or elsewhere, affecting its ability to conduct its operations and/or demand for its poultry products; contamination of Pilgrim's Pride's products, which has previously and can in the future lead to product liability claims and product recalls; exposure to risks related to product liability, product recalls, property damage and injuries to persons, for which insurance coverage is expensive, limited and potentially inadequate; management of cash resources; restrictions imposed by, and as a result of, Pilgrim's Pride's leverage; changes in laws or regulations affecting Pilgrim's Pride's operations or the application thereof; new immigration legislation or increased enforcement efforts in connection with existing immigration legislation that cause the costs of doing business to increase, cause Pilgrim's Pride to change the way in which it does business, or otherwise disrupt its operations; competitive factors and pricing pressures or the loss of one or more of Pilgrim's Pride's largest customers; currency exchange rate fluctuations, trade barriers, exchange controls, expropriation and other risks associated with foreign operations; disruptions in international markets and distribution channels, including, but not limited to, the impacts of the Russia-Ukraine conflict; the risk of cyber-attacks, natural disasters, power losses, unauthorized access, telecommunication failures, and other problems on our information systems; and the impact of uncertainties of litigation and other legal matters described in our most recent Form 10-K and Form 10-Q, including the In re Broiler Chicken Antitrust Litigation, as well as other risks described under "Risk Factors" in the Company's Annual Report on Form 10-K, Quarterly Reports on Form 10-Q and subsequent filings with the Securities and Exchange Commission. The forward looking statements in this release speak only as of the date hereof, and the Company undertakes no obligation to update any such statement after the date of this release, whether as a result of new information, future developments or otherwise, except as may be required by applicable law
- Actual results could differ materially from those projected in these forward-looking statements as a result of these factors, among others, many of which are beyond our control. In making these statements, we are not undertaking, and specifically decline to undertake, any obligation to address or update each or any factor in future filings or communications regarding our business or results, and we are not undertaking to address how any of these factors may have caused changes to information contained in previous filings or communications. Although we have attempted to list comprehensively these important cautionary risk factors, we must caution investors and others that other factors may in the future prove to be important and affecting our business or results of operations
- This presentation may include information that may be considered non-GAAP financial information as contemplated by SEC Regulation G, Rule 100, including EBITDA, Adjusted EBITDA, LTM EBITDA, Net Debt, Free Cash Flow, Adjusted EBITDA Margin and others. Accordingly, we have provided tables in the accompanying appendix and in our previous filings with the SEC that reconcile these measures to their corresponding GAAP-based measures and explain why these measures are useful to investors, which can be obtained from the Consolidated Statements of Income provided with our previous filings with the SEC. Our method of computation may or may not be comparable to other similarly titled measures used in filings with the SEC by other companies. See the consolidated statements of income and consolidated statements of cash flows included in our financial statements.

Second Quarter 2025 Financial Review



Main Indicators (\$MM)	Q2 2025	Q2 2024
Net Revenue	4,757.4	4,559.3
Gross Profit	715.3	691.6
SG&A	199.5	214.2
Operating Income	512.3	440.8
Net Interest	31.5	15.3
Net Income	356.0	326.5
Earnings Per Share (EPS)	1.49	1.37
Adjusted EBITDA*	686.9	655.9
<i>Adjusted EBITDA Margin*</i>	14.4%	14.4%

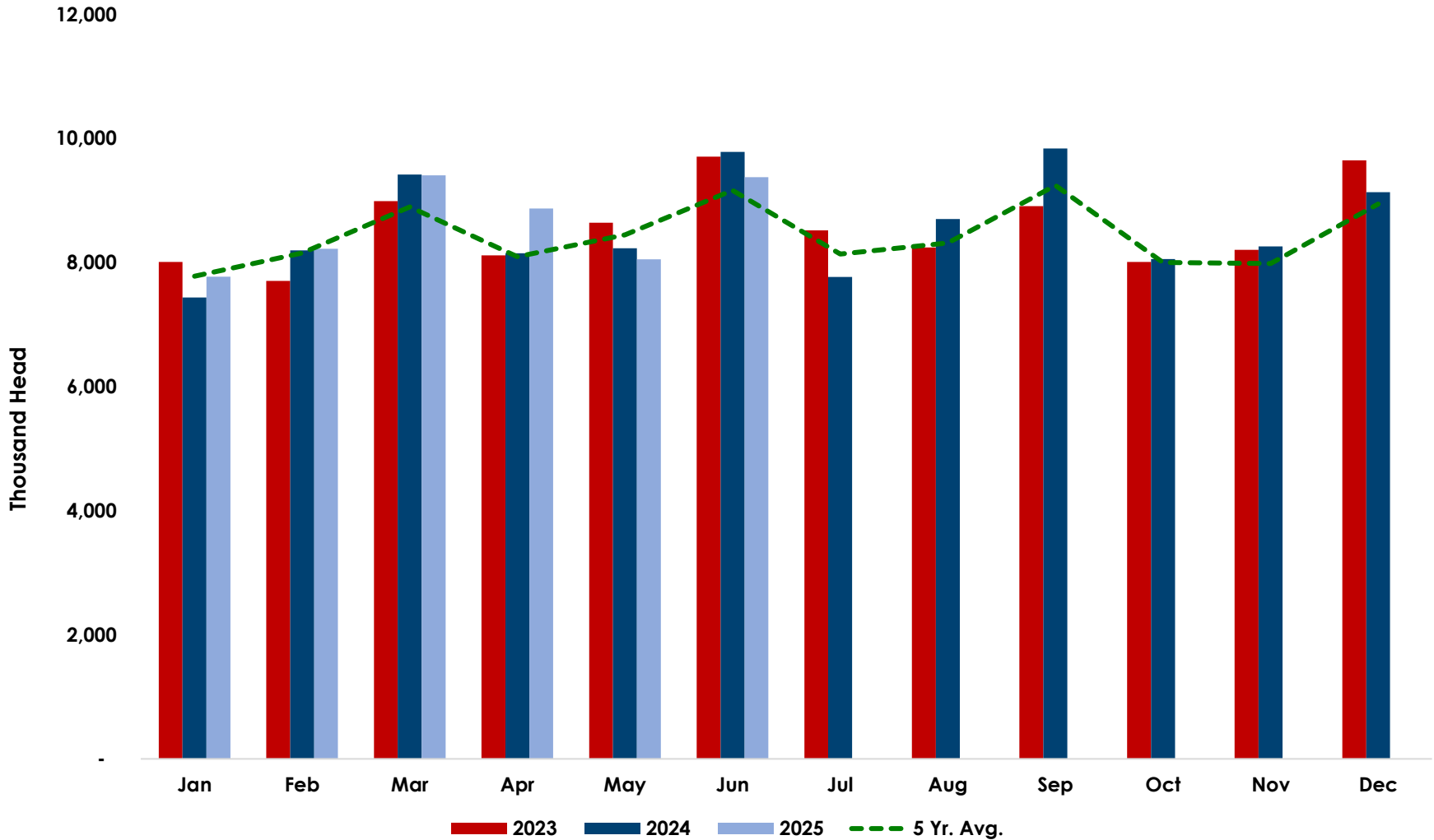
* This is a non-GAAP measurement considered by management to be useful in understanding our results. Please see the appendix and most recent SEC financial filings for definition of this measurement and reconciliation to US GAAP.

- U.S.: Year-over-year (YoY) increase in commodity market pricing positively impacted our Big Bird business; along with growth with Key Customers in Retail and Foodservice drove increased operating income for the US business; Europe: Continued YoY profit improvement due to execution of strategy to reduce cost and improve operational efficiencies; Mexico: profitability declined primarily due to Foreign Currency impacts.
- SG&A is lower primarily due to a decrease in legal settlements and defense costs
- Net interest increase due to lower YoY cash balance during Q2 2025, as a result of the dividend paid in April.
- Q2 2025 Adjusted EBITDA* YoY increase driven by higher US sales with our Key Customers and continued focus on operating efficiencies in all regions.

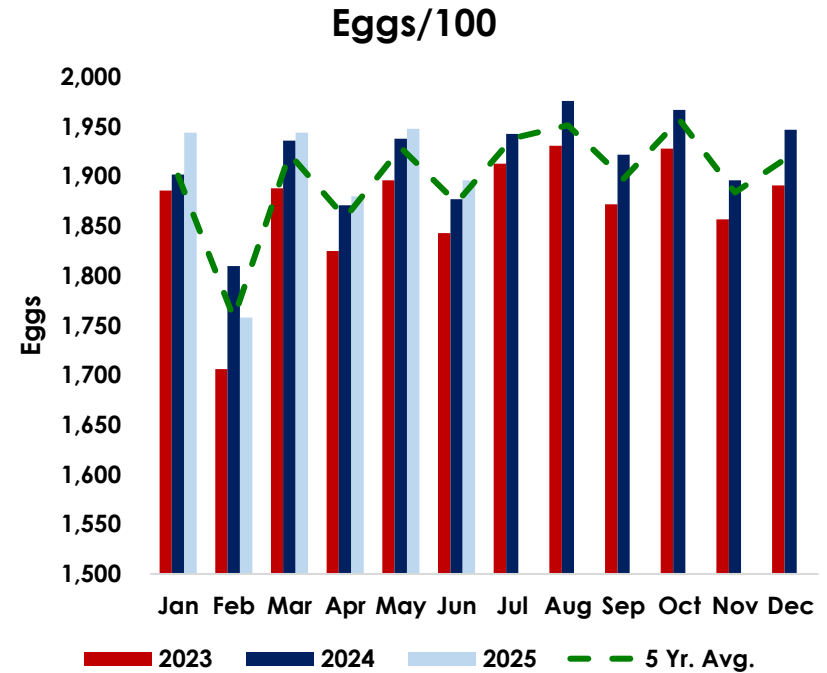
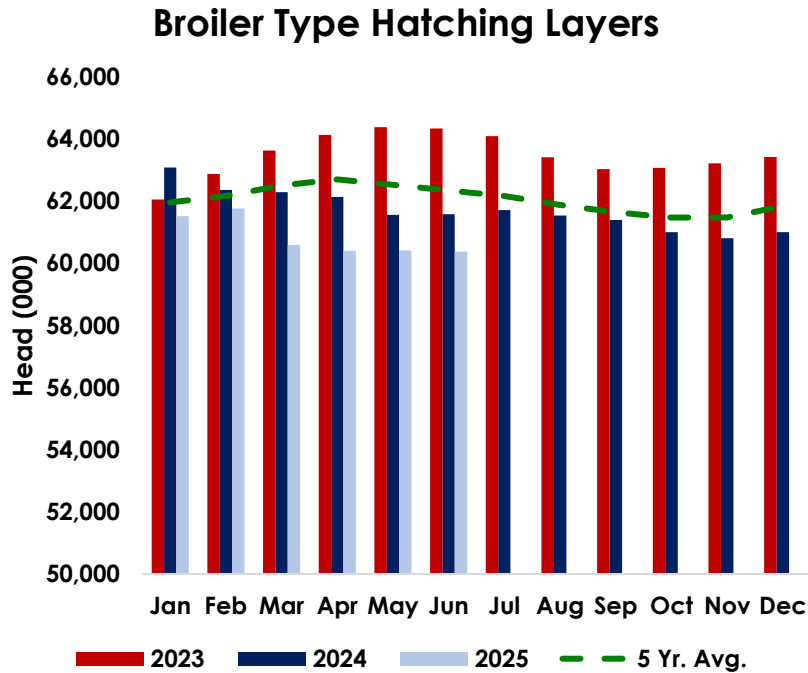
In \$MM	U.S.	EU	MX
Net Revenue	2,820.4	1,371.3	565.7
Adjusted Operating Income*	413.5	73.9	86.9
<i>Adjusted Operating Income Margin*</i>	14.7%	5.4%	15.4%

Pullet Placements Increased 0.5% Y/Y in Q2-2025

Intended Pullet Placements, Domestic Use



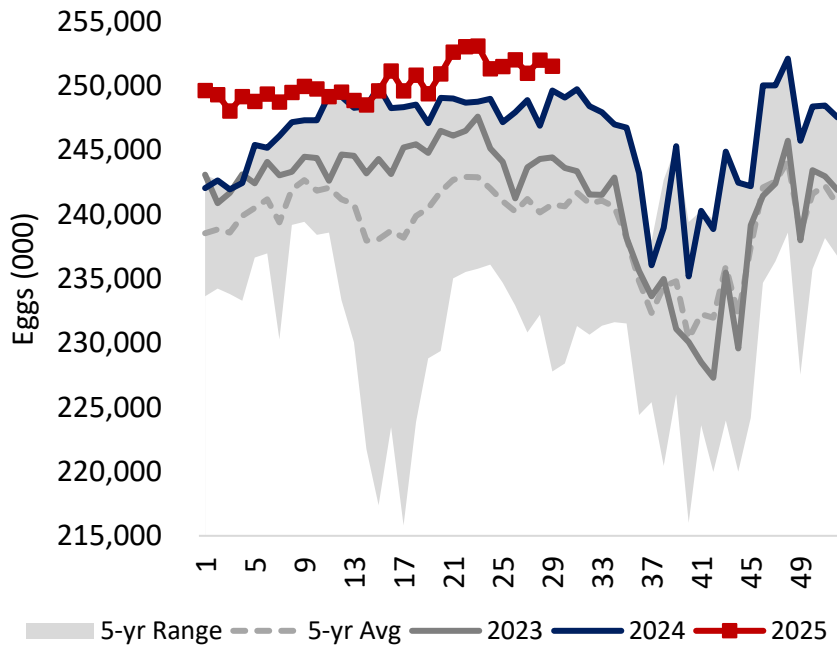
Broiler Layer Flock Decreased Y/Y in Q2-25; Eggs/100 Slightly Up Y/Y in Q2-25



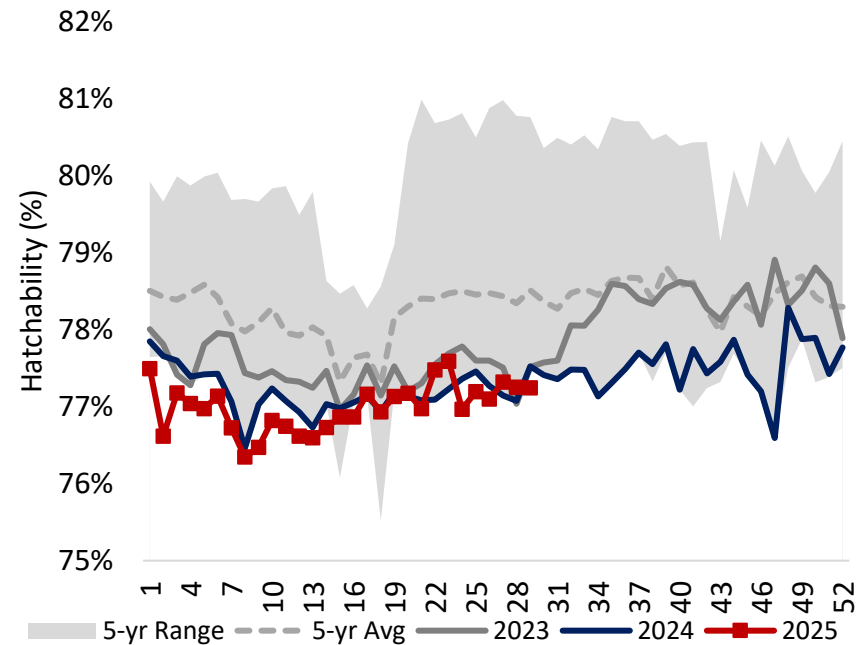
- Broiler layer flock -2.2% YoY in Q2-25.
- Eggs/100 +0.7% YoY in Q2-25.

Egg Sets Increased 1.1% YoY in Q2-25; Hatchability Flat Compared to Q2-24 Levels

Chicken Eggs Set by Week - USDA



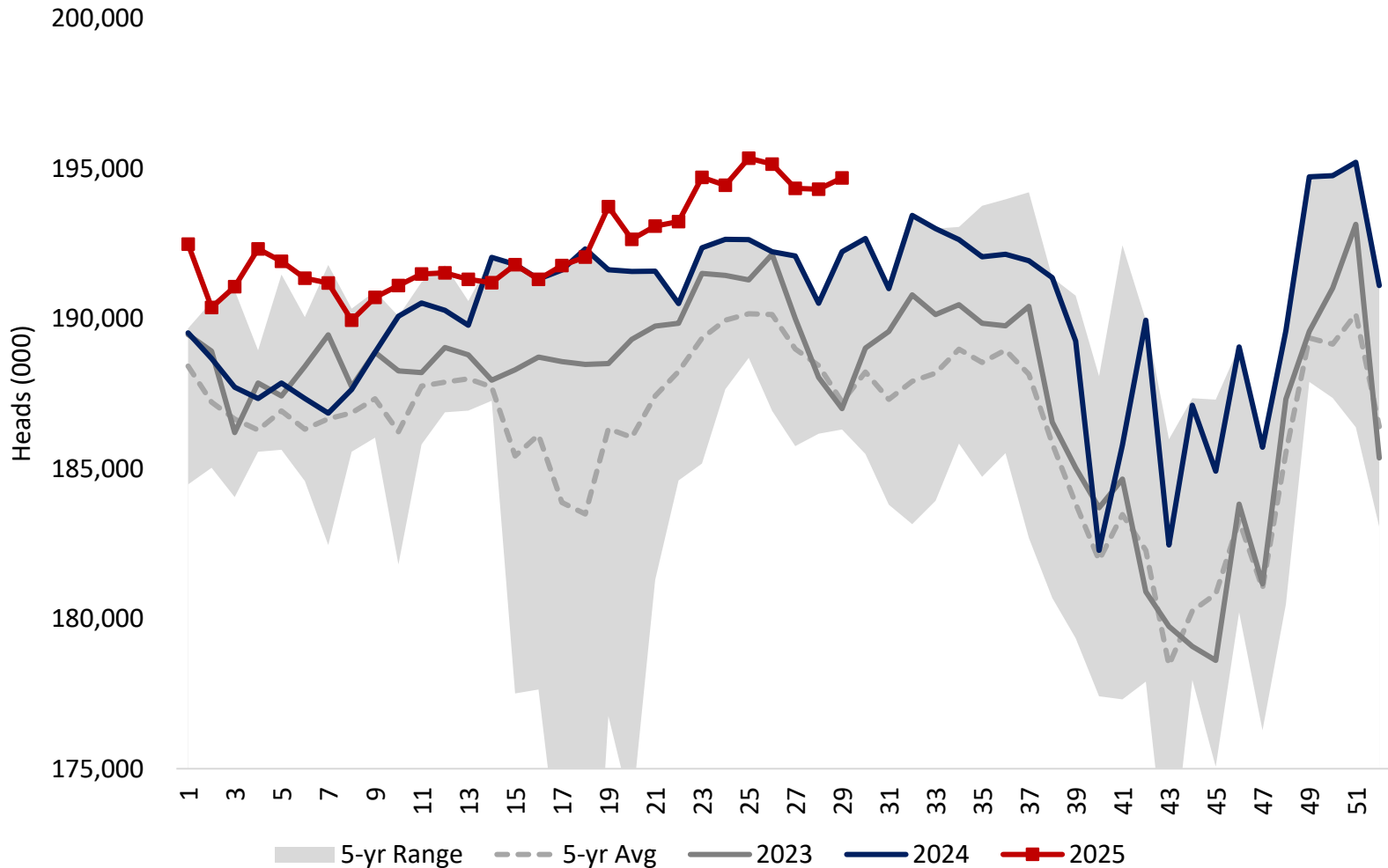
Chicken Hatchability by Week - USDA



Broiler Placements Increased 0.7% Above Year-Ago Levels in Q2-25



Chicks Placements by Week - USDA

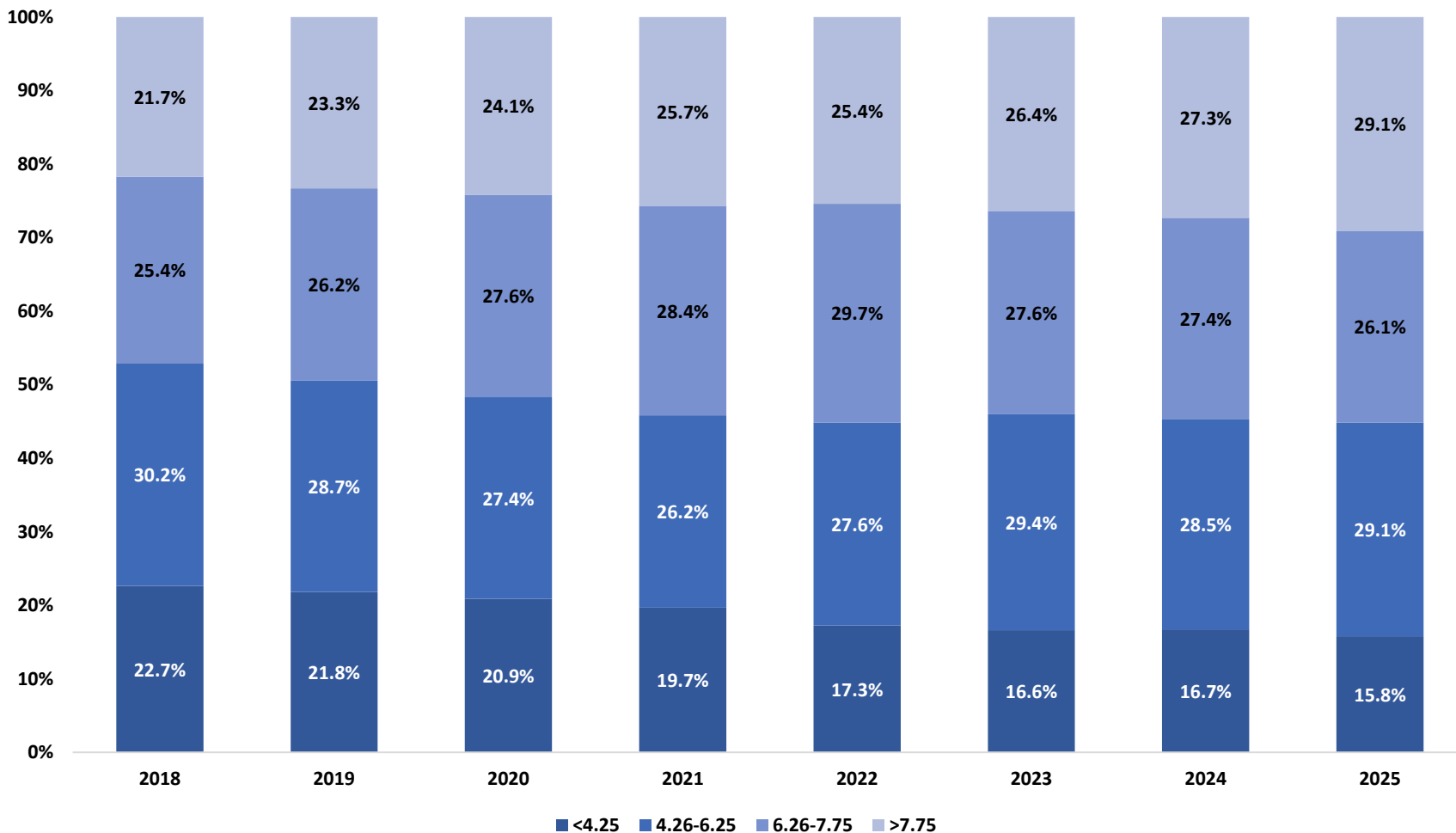


Source: USDA

Increased Head Counts in Big Bird Debone Segment in Q2-25



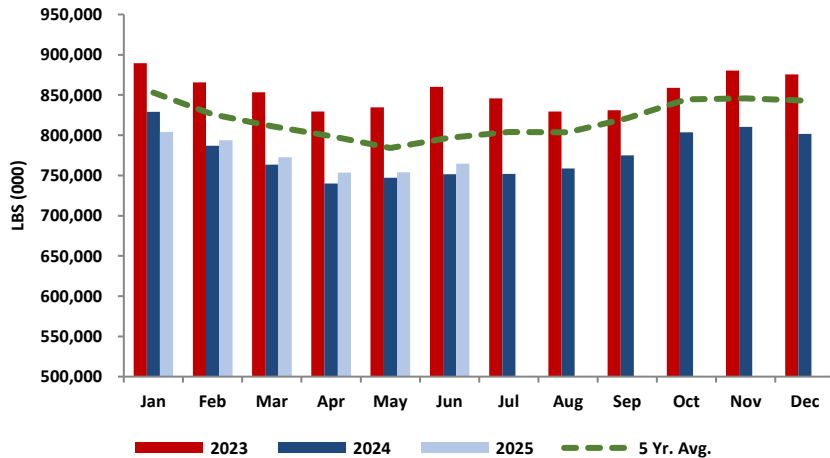
Head Processed by Size



Industry Cold Storage Supplies in Q2-25 Above YA but Below 5-Year Average



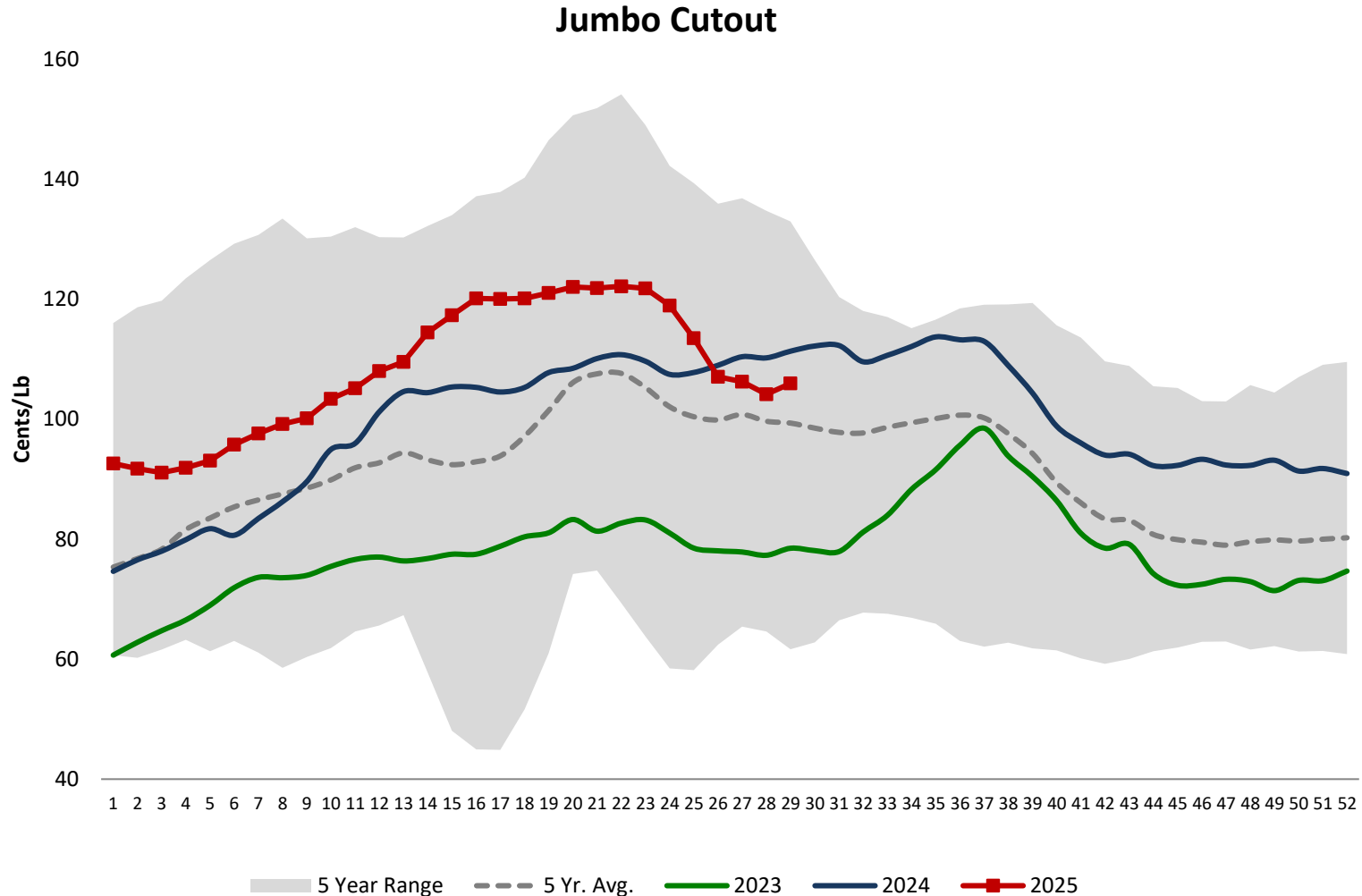
Total Chicken Inventories



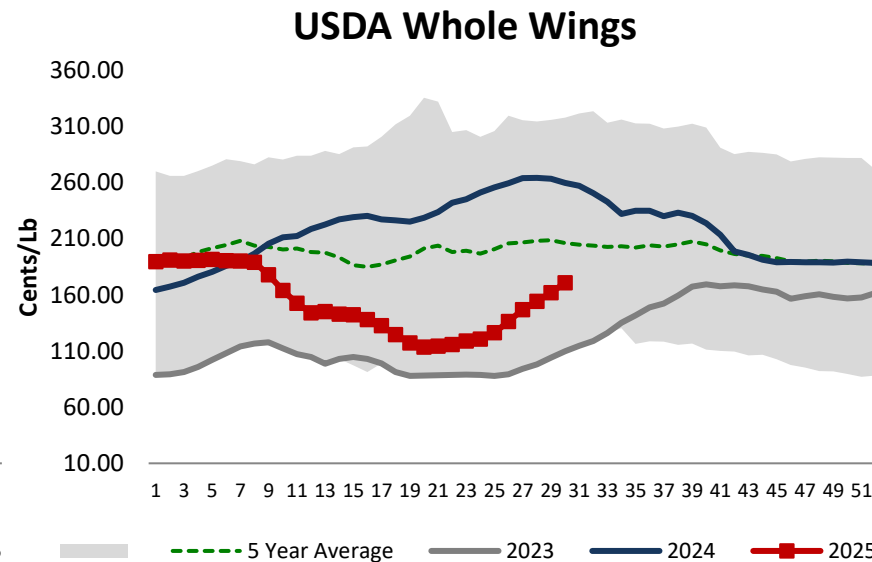
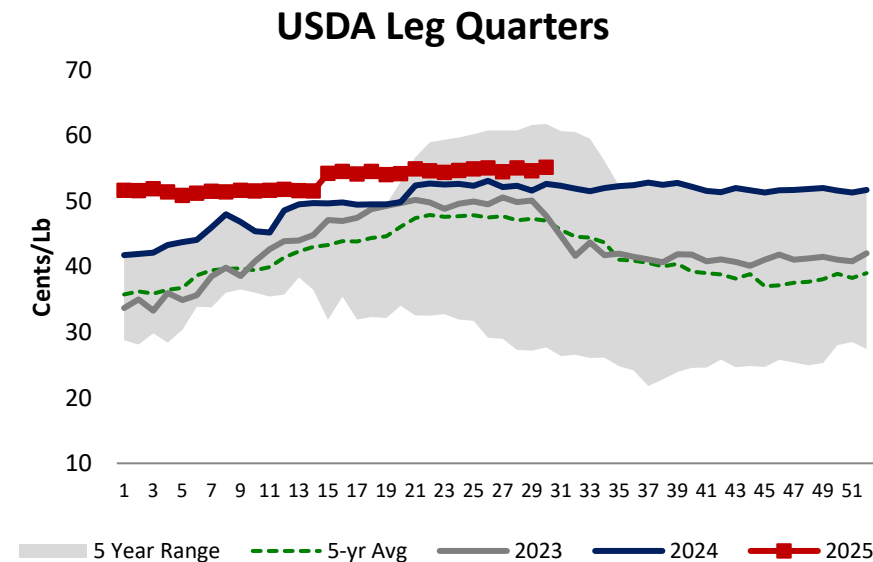
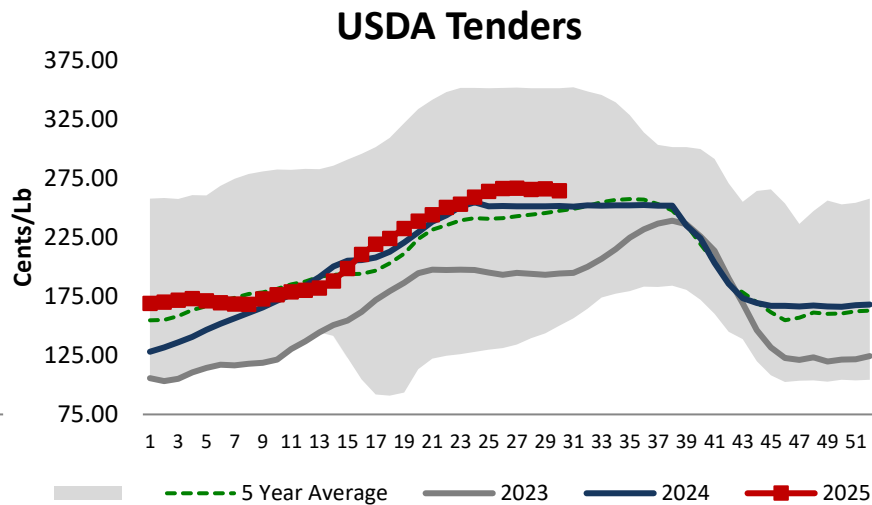
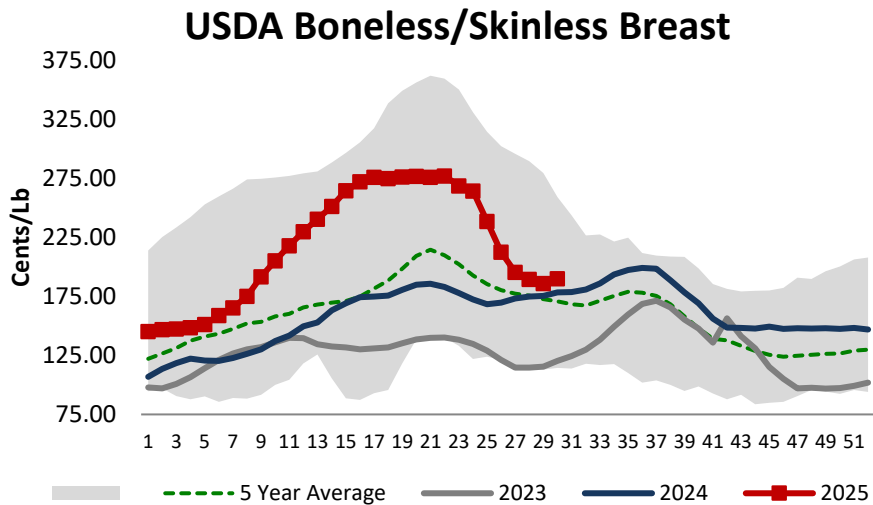
Frozen Chicken Inventory (000 LBS)						
Part	Jun-24	May-25	Jun-25	Y/Y Change	M/M Change	
Broilers	11,525	8,488	7,614	▼ -33.9%	▼	-10.3%
Hens	3,753	4,968	5,194	▲ 38.4%	▲	4.5%
Breast Meat	206,367	222,282	227,113	▲ 10.1%	▲	2.2%
Wings	49,992	56,866	52,468	▲ 5.0%	▼	-7.7%
LQ	54,667	53,683	55,008	▲ 0.6%	▲	2.5%
Legs	13,688	13,626	14,205	▲ 3.8%	▲	4.2%
Drums	29,265	26,998	25,644	▼ -12.4%	▼	-5.0%
Thighs	8,659	7,238	7,007	▼ -19.1%	▼	-3.2%
Thigh Meat	13,588	16,031	16,808	▲ 23.7%	▲	4.8%
Paws and Feet	30,647	31,230	31,932	▲ 4.2%	▲	2.2%
Others	323,636	312,337	321,768	▼ -0.6%	▲	3.0%
Total Chicken	745,779	753,747	764,761	▲ 2.5%	▲	1.5%

- Total Inventories ended Q2 up 1.8% Y/Y and -4.5% below 5-year average.
- Broilers inventories decreased by 33.9% and hens' increased by 38.4%.
- Breast meat inventories increased 10.1% Y/Y.
- Wing inventories increased 5.0% but are below year ago.
- Dark Meat inventories decreased 0.9% Y/Y.
- Paws and feet inventory increased 4.2%.

Jumbo Cutout Pricing Trended Above Year Ago and 5-Year Average in Q2-25



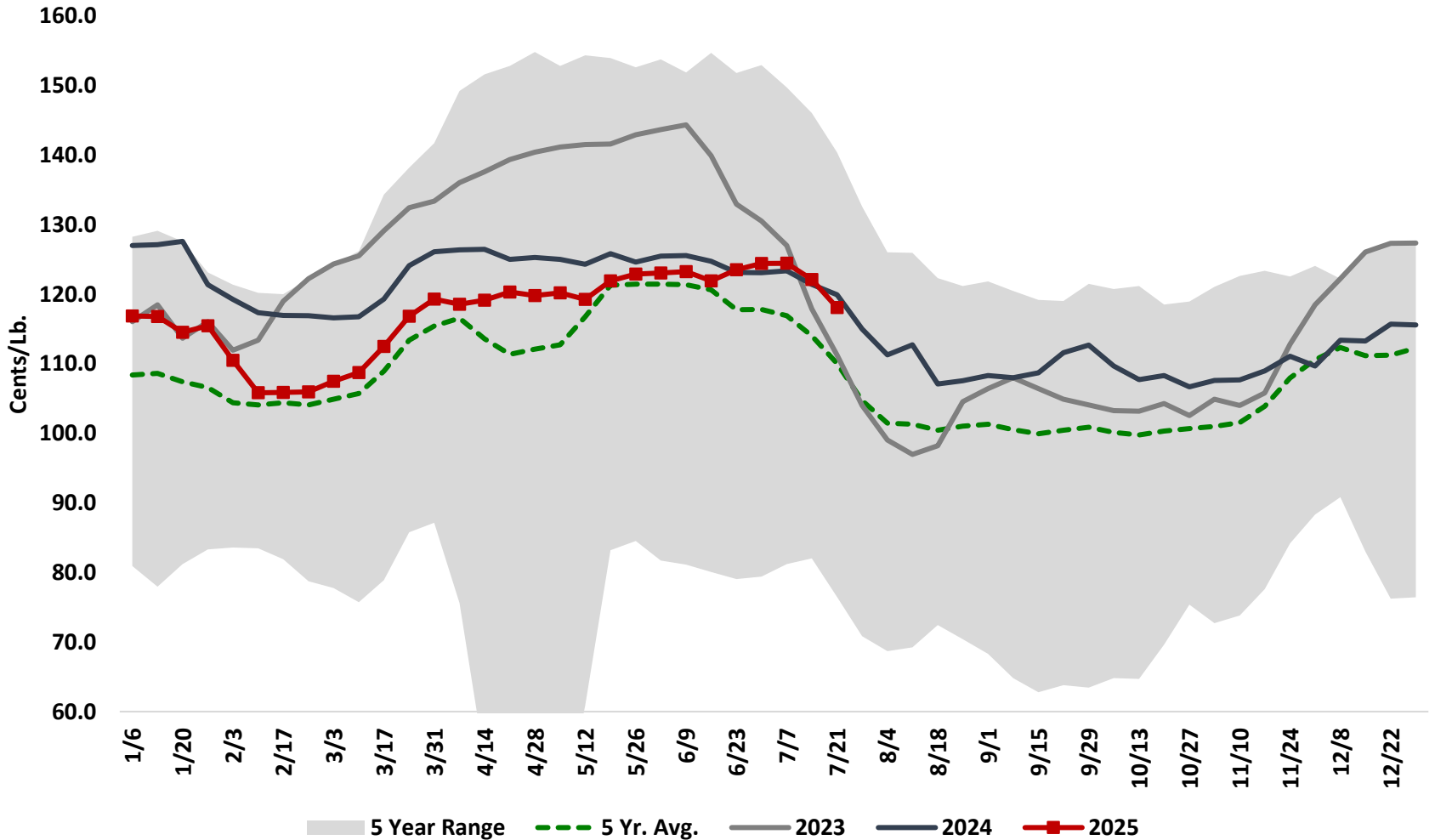
BSB peaked before dropping, Tenders strong, Wings began late recovery, LQ steady in Q2-25



WOG Pricing Below YA in Q2-25, still above 5-Year Average

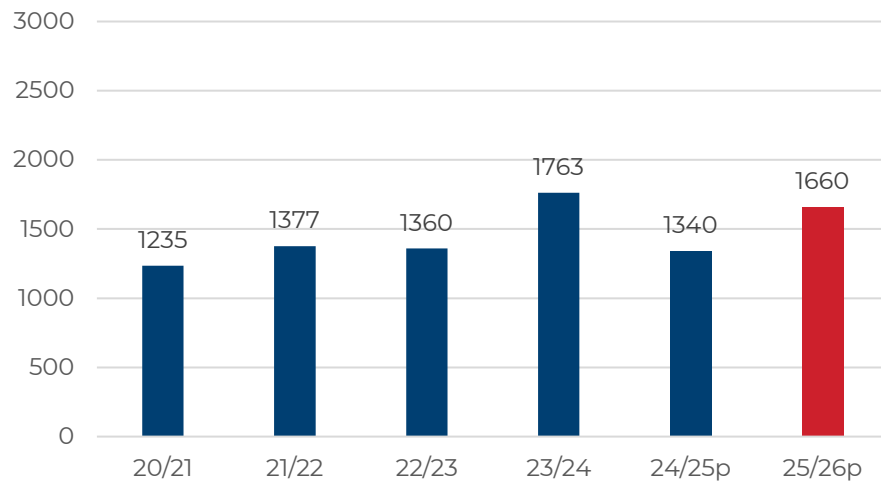


EMI WOG 2.5-4.0 LBS

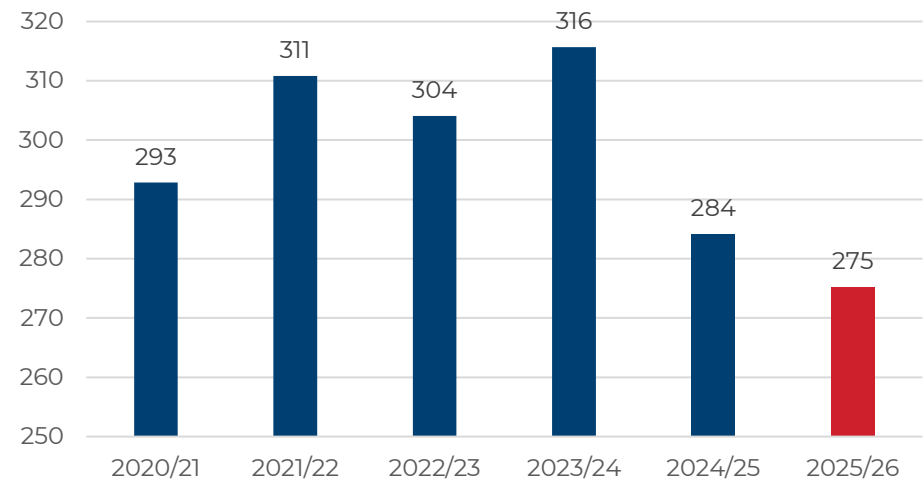


Corn Dynamics

US Corn Ending Stocks (MBUs)



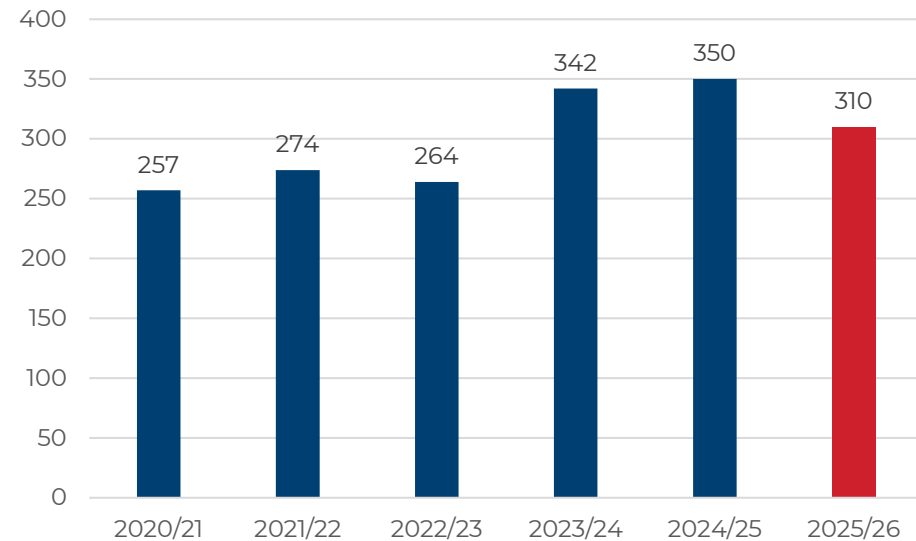
World Corn Endings stocks (MMT)



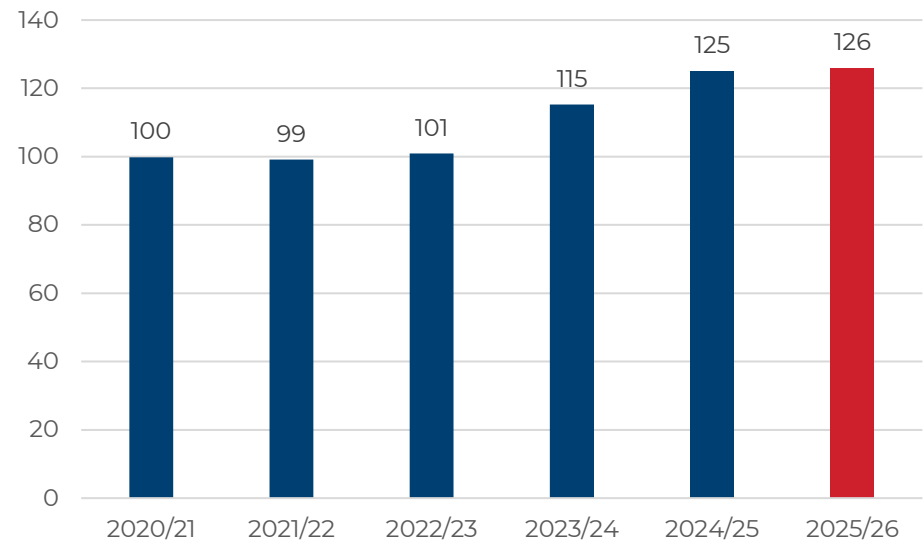
- US stocks rebuild with large acreage and favorable growing season
- Brazil and Argentina see YoY improvement in production for 24/25
- USDA sees very high global corn demand as reason for drawdown in global corn stocks. China import demand remains major question.

Soybean Dynamics

US Soybean End Stocks (MBU)



World Soybean End Stocks (MMT)

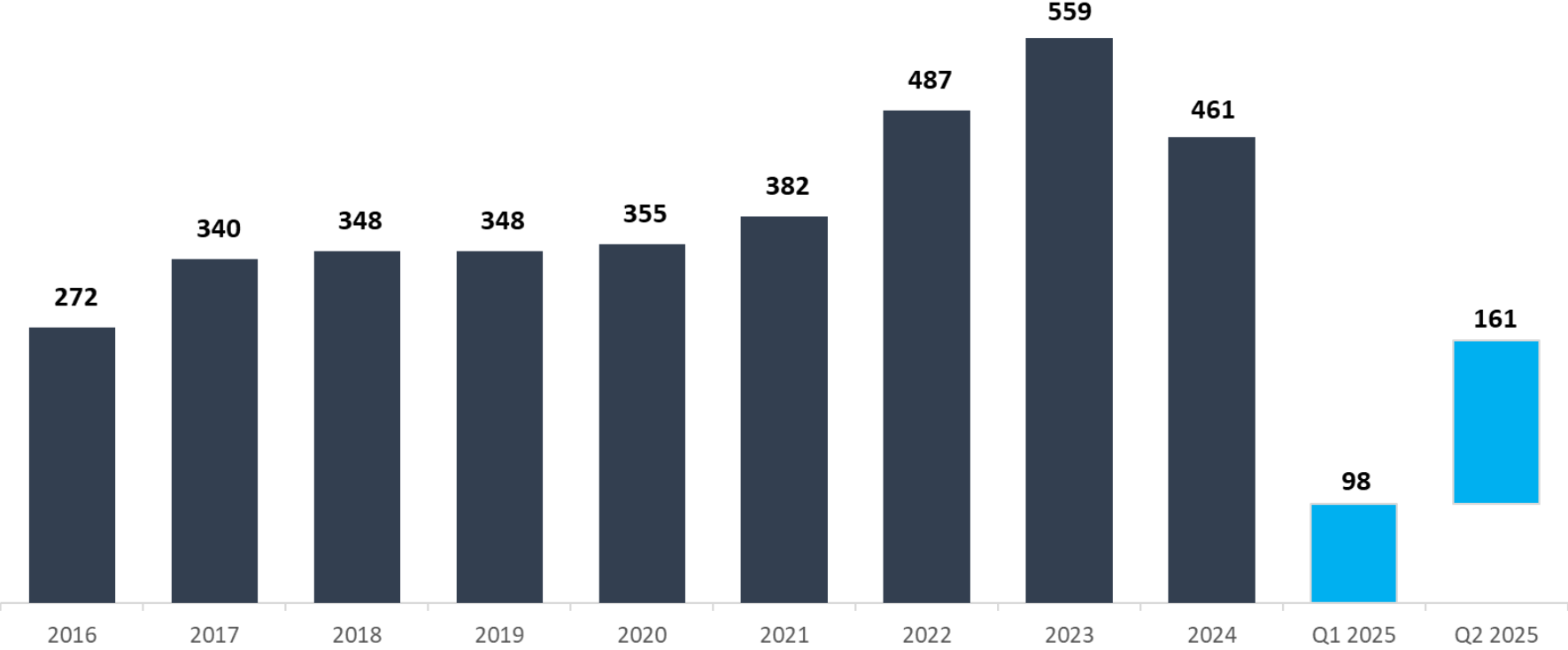


- USDA forecasting smaller US ending stocks based on very high soy crush demand
- South America hits new record high soybean production
- Global bean stocks hit record high in 24/25, expected to swell further in 25/26

Fiscal Year 2025 Capital Spending



Capex (US\$M)



- Continued investment in strategic projects will support Key Customers' growth and emphasize our focus on further diversification of our portfolio and operational improvements



APPENDIX

Appendix: Reconciliation of Adjusted EBITDA



“EBITDA” is defined as the sum of net income plus interest, taxes, depreciation and amortization. “Adjusted EBITDA” is calculated by adding to EBITDA certain items of expense and deducting from EBITDA certain items of income that we believe are not indicative of our ongoing operating performance consisting of: (1) foreign currency transaction losses (gains), (2) costs related to litigation settlements, (3) restructuring activities losses, and (4) net income attributable to noncontrolling interests. EBITDA is presented because it is used by management and we believe it is frequently used by securities analysts, investors and other interested parties, in addition to and not in lieu of results prepared in conformity with accounting principles generally accepted in the U.S. (“U.S. GAAP”), to compare the performance of companies. We believe investors would be interested in our Adjusted EBITDA because this is how our management analyzes EBITDA applicable to continuing operations. The Company also believes that Adjusted EBITDA, in combination with the Company’s financial results calculated in accordance with U.S. GAAP, provides investors with additional perspective regarding the impact of certain significant items on EBITDA and facilitates a more direct comparison of its performance with its competitors. EBITDA and Adjusted EBITDA are not measurements of financial performance under U.S. GAAP. EBITDA and Adjusted EBITDA have limitations as analytical tools and should not be considered in isolation or as substitutes for an analysis of our results as reported under U.S. GAAP. In addition, other companies in our industry may calculate these measures differently limiting their usefulness as a comparative measure. Because of these limitations, EBITDA and Adjusted EBITDA should not be considered as an alternative to net income as indicators of our operating performance or any other measures of performance derived in accordance with U.S. GAAP. These limitations should be compensated for by relying primarily on our U.S. GAAP results and using EBITDA and Adjusted EBITDA only on a supplemental basis.

Appendix: Reconciliation of Adjusted EBITDA



PILGRIM'S PRIDE CORPORATION
Reconciliation of Adjusted EBITDA
(Unaudited)

	Three Months Ended		Six Months Ended	
	June 29, 2025	June 30, 2024	June 29, 2025	June 30, 2024
	(In thousands)			
Net income	\$ 356,009	\$ 326,523	\$ 652,352	\$ 501,461
Add:				
Interest expense, net ^(a)	31,451	15,338	48,236	46,235
Income tax expense	119,573	100,650	213,672	152,712
Depreciation and amortization	113,504	107,948	218,022	211,298
EBITDA	620,537	550,459	1,132,282	911,706
Add:				
Foreign currency transaction losses (gains) ^(b)	4,892	(2,225)	2,839	(6,562)
Litigation settlements ^(c)	58,464	71,250	65,714	72,190
Restructuring activities losses ^(d)	3,499	36,675	20,111	51,234
Minus:				
Net income attributable to noncontrolling interest	489	220	799	737
Adjusted EBITDA	<u>\$ 686,903</u>	<u>\$ 655,939</u>	<u>\$ 1,220,147</u>	<u>\$ 1,027,831</u>

- a. Interest expense, net, consists of interest expense less interest income.
- b. Prior to April 1, 2024, the Company measured the financial statements of its Mexico reportable segment as if the U.S. dollar were the functional currency. Accordingly, we remeasured assets and liabilities, other than nonmonetary assets, of the Mexico reportable segment at current exchange rates. We remeasured nonmonetary assets using the historical exchange rate in effect on the date of each asset's acquisition. Currency exchange gains or losses resulting from these remeasurements were previously recognized in the line item Foreign currency transaction losses (gains) in the Condensed Consolidated Statements of Income. Effective April 1, 2024, the Company changed the functional currency of its Mexico reportable segment from U.S. dollar to Mexican peso, which means all translation gains/losses on outstanding balances are now recognized in accumulated other comprehensive income. Transactional functional currency gains/losses are included in the line item Foreign currency transaction losses (gains) in the Condensed Consolidated Statements of Income.
- c. This represents expenses recognized in anticipation of probable settlements in ongoing litigation.
- d. Restructuring activities losses are related to costs incurred, such as severance, lease terminations, asset impairment and other charges, as part of multiple ongoing restructuring initiatives throughout our Europe reportable segment.

Appendix: Reconciliation of LTM Adjusted EBITDA



The summary unaudited consolidated income statement data for the twelve months ended June 29, 2025 (the LTM Period) have been calculated by subtracting the applicable unaudited consolidated income statement data for the six months ended June 30, 2024 from the sum of (1) the applicable audited consolidated income statement data for the year ended December 29, 2024 and (2) the applicable unaudited consolidated income statement data for the six months ended June 30, 2025.

PILGRIM'S PRIDE CORPORATION Reconciliation of LTM Adjusted EBITDA (Unaudited)

	Three Months Ended				LTM Ended
	September 29, 2024	December 29, 2024	March 30, 2025	June 29, 2025	June 29, 2025
	(In thousands)				
Net income	\$ 349,990	\$ 235,772	\$ 296,343	\$ 356,009	\$ 1,238,114
Add:					
Interest expense, net	19,498	22,776	16,785	31,451	90,510
Income tax expense	131,609	40,725	94,099	119,573	386,006
Depreciation and amortization	110,470	111,854	104,518	113,504	440,346
EBITDA	611,567	411,127	511,745	620,537	2,154,976
Add:					
Foreign currency transaction losses (gains)	(678)	(2,785)	(2,053)	4,892	(624)
Litigation settlements	—	95,038	7,250	58,464	160,752
Restructuring activities losses	30,836	11,318	16,612	3,499	62,265
Loss on settlement of pension from plan termination	10,709	10,940	—	—	21,649
Inventory write-down as a result of hurricane	8,075	—	—	—	8,075
Minus:					
Net income (loss) attributable to noncontrolling interest	130	(82)	310	489	847
Adjusted EBITDA	\$ 660,379	\$ 525,720	\$ 533,244	\$ 686,903	\$ 2,406,246

Appendix: Reconciliation of EBITDA Margin



EBITDA margins have been calculated by taking the relevant unaudited EBITDA figures, then dividing by net sales for the applicable period. EBITDA margins are presented because they are used by management and we believe it is frequently used by securities analysts, investors and other interested parties, as a supplement to our results prepared in accordance with U.S. GAAP, to compare the performance of companies.

PILGRIM'S PRIDE CORPORATION Reconciliation of EBITDA Margin (Unaudited)

	Three Months Ended		Six Months Ended		Three Months Ended		Six Months Ended	
	June 29, 2025	June 30, 2024	June 29, 2025	June 30, 2024	June 29, 2025	June 30, 2024	June 29, 2025	June 30, 2024
	(In thousands)							
Net income	\$ 356,009	\$ 326,523	\$ 652,352	\$ 501,461	7.48 %	7.16 %	7.08 %	5.62 %
Add:								
Interest expense, net	31,451	15,338	48,236	46,235	0.66 %	0.34 %	0.52 %	0.52 %
Income tax expense	119,573	100,650	213,672	152,712	2.51 %	2.21 %	2.32 %	1.71 %
Depreciation and amortization	113,504	107,948	218,022	211,298	2.38 %	2.36 %	2.36 %	2.36 %
EBITDA	620,537	550,459	1,132,282	911,706	13.03 %	12.07 %	12.28 %	10.21 %
Add:								
Foreign currency transaction losses (gains)	4,892	(2,225)	2,839	(6,562)	0.10 %	(0.04)%	0.03 %	(0.07)%
Litigation settlements	58,464	71,250	65,714	72,190	1.23 %	1.56 %	0.71 %	0.81 %
Restructuring activities losses	3,499	36,675	20,111	51,234	0.07 %	0.80 %	0.22 %	0.57 %
Minus:								
Net income attributable to noncontrolling interest	489	220	799	737	0.01 %	— %	0.01 %	0.01 %
Adjusted EBITDA	<u>\$ 686,903</u>	<u>\$ 655,939</u>	<u>\$ 1,220,147</u>	<u>\$ 1,027,831</u>	<u>14.42 %</u>	<u>14.39 %</u>	<u>13.23 %</u>	<u>11.51 %</u>
Net sales	\$4,757,365	\$ 4,559,314	\$ 9,220,374	\$ 8,921,248	—	—	—	—

Appendix: Reconciliation of Adjusted EBITDA by Segment



Adjusted EBITDA by segment figures are presented because they are used by management and we believe they are frequently used by securities analysts, investors and other interested parties, as a supplement to our results prepared in accordance with U.S. GAAP, to compare the performance of companies.

PILGRIM'S PRIDE CORPORATION Reconciliation of Adjusted EBITDA (Unaudited)

	Three Months Ended				Three Months Ended			
	June 29, 2025				June 30, 2024			
	U.S.	Europe	Mexico	Total	U.S.	Europe	Mexico	Total
	(In thousands)							
Net income	\$ 239,262	\$ 54,880	\$ 61,867	\$ 356,009	\$ 199,076	\$ 41,511	\$ 85,936	\$ 326,523
Add:								
Interest expense, net ^(a)	35,651	(174)	(4,026)	31,451	24,946	(2,556)	(7,052)	15,338
Income tax expense	78,204	16,001	25,368	119,573	82,117	(14,212)	32,745	100,650
Depreciation and amortization	71,149	36,929	5,426	113,504	67,200	34,865	5,883	107,948
EBITDA	424,266	107,636	88,635	620,537	373,339	59,608	117,512	550,459
Add:								
Foreign currency transaction losses (gains) ^(b)	4	685	4,203	4,892	(1)	(39)	(2,185)	(2,225)
Litigation settlements ^(c)	58,464	—	—	58,464	71,250	—	—	71,250
Restructuring activities losses ^(d)	—	3,499	—	3,499	—	36,675	—	36,675
Minus:								
Net income attributable to noncontrolling interest	—	—	489	489	—	—	220	220
Adjusted EBITDA	<u>\$ 482,734</u>	<u>\$ 111,820</u>	<u>\$ 92,349</u>	<u>\$ 686,903</u>	<u>\$ 444,588</u>	<u>\$ 96,244</u>	<u>\$ 115,107</u>	<u>\$ 655,939</u>

Appendix: Reconciliation of Adjusted EBITDA By Segment



PILGRIM'S PRIDE CORPORATION Reconciliation of Adjusted EBITDA (Unaudited)

	Six Months Ended				Six Months Ended			
	June 29, 2025				June 30, 2024			
	U.S.	Europe	Mexico	Total	U.S.	Europe	Mexico	Total
	(In thousands)							
Net income	\$ 461,558	\$ 97,030	\$ 93,764	\$ 652,352	\$ 301,707	\$ 66,023	\$ 133,731	\$ 501,461
Add:								
Interest expense, net ^(a)	61,218	(2,078)	(10,904)	48,236	69,532	(4,539)	(18,758)	46,235
Income tax expense (benefit)	149,216	25,923	38,533	213,672	114,177	(4,655)	43,190	152,712
Depreciation and amortization	137,535	70,066	10,421	218,022	129,885	69,893	11,520	211,298
EBITDA	809,527	190,941	131,814	1,132,282	615,301	126,722	169,683	911,706
Add:								
Foreign currency transaction losses (gains) ^(b)	3	313	2,523	2,839	1	(255)	(6,308)	(6,562)
Litigation settlements ^(c)	65,714	—	—	65,714	72,190	—	—	72,190
Restructuring activities losses ^(d)	—	20,111	—	20,111	—	51,234	—	51,234
Minus:								
Net income attributable to noncontrolling interest	—	—	799	799	—	—	737	737
Adjusted EBITDA	<u>\$ 875,244</u>	<u>\$ 211,365</u>	<u>\$ 133,538</u>	<u>\$ 1,220,147</u>	<u>\$ 687,492</u>	<u>\$ 177,701</u>	<u>\$ 162,638</u>	<u>\$ 1,027,831</u>

- Interest expense, net, consists of interest expense less interest income.
- Prior to April 1, 2024, the Company measured the financial statements of its Mexico reportable segment as if the U.S. dollar were the functional currency. Accordingly, we remeasured assets and liabilities, other than nonmonetary assets, of the Mexico reportable segment at current exchange rates. We remeasured nonmonetary assets using the historical exchange rate in effect on the date of each asset's acquisition. Currency exchange gains or losses resulting from these remeasurements were previously recognized in the line item Foreign currency transaction losses (gains) in the Condensed Consolidated Statements of Income. Effective April 1, 2024, the Company changed the functional currency of its Mexico reportable segment from U.S. dollar to Mexican peso, which means all translation gains/losses on outstanding balances are now recognized in accumulated other comprehensive income. Transactional functional currency gains/losses are included in the line item Foreign currency transaction losses (gains) in the Condensed Consolidated Statements of Income.
- This represents expenses recognized in anticipation of probable settlements in ongoing litigation.
- Restructuring activities losses are related to costs incurred, such as severance, lease terminations, asset impairment and other charges, as part of multiple ongoing restructuring initiatives throughout our Europe reportable segment.

Appendix: Reconciliation of Adjusted Operating Income



PILGRIM'S PRIDE CORPORATION Reconciliation of Adjusted Operating Income (Unaudited)

	Three Months Ended		Six Months Ended	
	June 29, 2025	June 30, 2024	June 29, 2025	June 30, 2024
	(In thousands)			
GAAP operating income, U.S. operations	\$ 354,987	\$ 307,988	\$ 673,793	\$ 487,405
Litigation settlements	58,464	71,250	65,714	72,190
Adjusted operating income, U.S. operations	<u>\$ 413,451</u>	<u>\$ 379,238</u>	<u>\$ 739,507</u>	<u>\$ 559,595</u>
Adjusted operating income margin, U.S. operations	14.7 %	14.2 %	13.3 %	10.7 %

	Three Months Ended		Six Months Ended	
	June 29, 2025	June 30, 2024	June 29, 2025	June 30, 2024
	(In thousands)			
GAAP operating income, Europe operations	\$ 70,419	\$ 23,993	\$ 119,490	\$ 55,109
Restructuring activities losses	3,499	36,675	20,111	51,234
Adjusted operating income, Europe operations	<u>\$ 73,918</u>	<u>\$ 60,668</u>	<u>\$ 139,601</u>	<u>\$ 106,343</u>
Adjusted operating income margin, Europe operations	5.4 %	4.7 %	5.4 %	4.1 %

	Three Months Ended		Six Months Ended	
	June 29, 2025	June 30, 2024	June 29, 2025	June 30, 2024
	(In thousands)			
GAAP operating income, Mexico operations	\$ 86,933	\$ 108,809	\$ 123,538	\$ 148,550
No adjustments	—	—	—	—
Adjusted operating income, Mexico operations	<u>\$ 86,933</u>	<u>\$ 108,809</u>	<u>\$ 123,538</u>	<u>\$ 148,550</u>
Adjusted operating income margin, Mexico operations	15.4 %	18.3 %	11.7 %	13.4 %

Adjusted Operating Income is calculated by adding to Operating Income certain items of expense and deducting from Operating Income certain items of income. Management believes that presentation of Adjusted Operating Income provides useful supplemental information about our operating performance and enables comparison of our performance between periods because certain costs shown below are not indicative of our current operating performance. A reconciliation of GAAP operating income to adjusted operating income as follows:

Appendix: Reconciliation of GAAP Operating Income Margin to Adjusted Operating Income Margin



PILGRIM'S PRIDE CORPORATION
Reconciliation of GAAP Operating Income Margin to Adjusted Operating Income Margin
(Unaudited)

	Three Months Ended		Six Months Ended	
	June 29, 2025	June 30, 2024	June 29, 2025	June 30, 2024
	(In percent)			
GAAP operating income margin, U.S. operations	12.6 %	11.6 %	12.1 %	9.3 %
Litigation settlements	2.1 %	2.6 %	1.2 %	1.4 %
Adjusted operating income margin, U.S. operations	14.7 %	14.2 %	13.3 %	10.7 %

	Three Months Ended		Six Months Ended	
	June 29, 2025	June 30, 2024	June 29, 2025	June 30, 2024
	(In percent)			
GAAP operating income margin, Europe operations	5.1 %	1.8 %	4.6 %	2.1 %
Restructuring activities losses	0.3 %	2.9 %	0.8 %	2.0 %
Adjusted operating income margin, Europe operations	5.4 %	4.7 %	5.4 %	4.1 %

	Three Months Ended		Six Months Ended	
	June 29, 2025	June 30, 2024	June 29, 2025	June 30, 2024
	(In percent)			
GAAP operating income margin, Mexico operations	15.4 %	18.3 %	11.7 %	13.4 %
No adjustments	— %	— %	— %	— %
Adjusted operating income margin, Mexico operations	15.4 %	18.3 %	11.7 %	13.4 %

Adjusted Operating Income Margin for each of our reportable segments is calculated by dividing Adjusted operating income by Net Sales. Management believes that presentation of Adjusted Operating Income Margin provides useful supplemental information about our operating performance and enables comparison of our performance between periods because certain costs shown below are not indicative of our current operating performance. A reconciliation of GAAP operating income margin for each of our reportable segments to adjusted operating income margin for each of our reportable segments is as follows:

Appendix: Reconciliation of Adjusted Net Income



Adjusted net income attributable to Pilgrim's Pride Corporation ("Pilgrim's") is calculated by adding to Net income attributable to Pilgrim's certain items of expense and deducting from Net income attributable to Pilgrim's certain items of income, as shown below in the table. Adjusted net income attributable to Pilgrim's Pride Corporation per common diluted share is presented because it is used by management, and we believe it is frequently used by securities analysts, investors and other interested parties, in addition to and not in lieu of results prepared in conformity with U.S. GAAP, to compare the performance of companies. Management also believe that this non-U.S. GAAP financial measure, in combination with our financial results calculated in accordance with U.S. GAAP, provides investors with additional perspective regarding the impact of such charges on net income attributable to Pilgrim's Pride Corporation per common diluted share. Adjusted net income attributable to Pilgrim's Pride Corporation per common diluted share is not a measurement of financial performance under U.S. GAAP, has limitations as an analytical tool and should not be considered in isolation or as a substitute for an analysis of our results as reported under U.S. GAAP. Management believes that presentation of adjusted net income attributable to Pilgrim's provides useful supplemental information about our operating performance and enables comparison of our performance between periods because certain costs shown below are not indicative of our current operating performance. A reconciliation of net income (loss) attributable to Pilgrim's Pride Corporation per common diluted share to adjusted net income attributable to Pilgrim's Pride Corporation per common diluted share is as follows:

PILGRIM'S PRIDE CORPORATION Reconciliation of Adjusted Net Income (Unaudited)

	Three Months Ended		Six Months Ended	
	June 29, 2025	June 30, 2024	June 29, 2025	June 30, 2024
	(In thousands, except per share data)			
Net income attributable to Pilgrim's	\$ 355,520	\$ 326,303	\$ 651,553	\$ 500,724
Add:				
Foreign currency transaction losses (gains)	4,892	(2,225)	2,839	(6,562)
Litigation settlements	58,464	71,250	65,714	72,190
Restructuring activities losses	3,499	36,675	20,111	51,234
Minus:				
Gain on early extinguishment of debt	—	11,159	—	11,159
Adjusted net income attributable to Pilgrim's before tax impact of adjustments	422,375	420,844	740,217	606,427
Net tax impact of adjustments ^(a)	(16,178)	(22,879)	(21,456)	(25,580)
Adjusted net income attributable to Pilgrim's	\$ 406,197	\$ 397,965	\$ 718,761	\$ 580,847
Weighted average diluted shares of common stock outstanding	238,427	237,733	238,354	237,615
Adjusted net income attributable to Pilgrim's per common diluted share	\$ 1.70	\$ 1.67	\$ 3.02	\$ 2.44

a. Net tax impact of adjustments represents the tax impact of all adjustments shown above.

Appendix: Reconciliation of GAAP EPS to Adjusted EPS



Adjusted EPS is calculated by dividing the adjusted net income attributable to Pilgrim's stockholders by the weighted average number of diluted shares. Management believes that Adjusted EPS provides useful supplemental information about our operating performance and enables comparison of our performance between periods because certain costs shown below are not indicative of our current operating performance. A reconciliation of U.S. GAAP to non-U.S. GAAP financial measures is as follows:

PILGRIM'S PRIDE CORPORATION Reconciliation of GAAP EPS to Adjusted EPS (Unaudited)

	Three Months Ended		Six Months Ended	
	June 29, 2025	June 30, 2024	June 29, 2025	June 30, 2024
	(In thousands, except per share data)			
GAAP EPS	\$ 1.49	\$ 1.37	\$ 2.73	\$ 2.11
Add:				
Foreign currency transaction losses (gains)	0.02	(0.01)	0.01	(0.03)
Litigation settlements	0.25	0.30	0.28	0.30
Restructuring activities losses	0.01	0.15	0.08	0.23
Minus:				
Gain on early extinguishment of debt	—	0.05	—	0.05
Adjusted EPS before tax impact of adjustments	1.77	1.76	3.10	2.56
Net tax impact of adjustments ^(a)	(0.07)	(0.09)	(0.08)	(0.12)
Adjusted EPS	\$ 1.70	\$ 1.67	\$ 3.02	\$ 2.44
Weighted average diluted shares of common stock outstanding	238,427	237,733	238,354	237,615

a. Net tax impact of adjustments represents the tax impact of all adjustments shown above.

Appendix: Supplementary Selected Segment and Geographic Data



PILGRIM'S PRIDE CORPORATION Supplementary Selected Segment and Geographic Data (Unaudited)

	Three Months Ended		Six Months Ended	
	June 29, 2025	June 30, 2024	June 29, 2025	June 30, 2024
(In thousands)				
Sources of net sales by geographic region of origin:				
U.S.	\$ 2,820,385	\$ 2,663,965	\$ 5,563,574	\$ 5,243,297
Europe	1,371,270	1,301,541	2,602,799	2,569,444
Mexico	565,710	593,808	1,054,001	1,108,507
Total net sales	<u>\$ 4,757,365</u>	<u>\$ 4,559,314</u>	<u>\$ 9,220,374</u>	<u>\$ 8,921,248</u>
Sources of cost of sales by geographic region of origin:				
U.S.	\$ 2,331,143	\$ 2,211,626	\$ 4,686,710	\$ 4,553,666
Europe	1,247,137	1,187,671	2,362,362	2,363,409
Mexico	463,790	468,391	901,134	928,638
Total cost of sales	<u>\$ 4,042,070</u>	<u>\$ 3,867,688</u>	<u>\$ 7,950,206</u>	<u>\$ 7,845,713</u>
Sources of gross profit by geographic region of origin:				
U.S.	\$ 489,242	\$ 452,339	\$ 876,864	\$ 689,631
Europe	124,133	113,870	240,437	206,035
Mexico	101,920	125,417	152,867	179,869
Total gross profit	<u>\$ 715,295</u>	<u>\$ 691,626</u>	<u>\$ 1,270,168</u>	<u>\$ 1,075,535</u>
Sources of operating income by geographic region of origin:				
U.S.	\$ 354,987	\$ 307,988	\$ 673,793	\$ 487,405
Europe	70,419	23,993	119,490	55,109
Mexico	86,933	108,809	123,538	148,550
Total operating income	<u>\$ 512,339</u>	<u>\$ 440,790</u>	<u>\$ 916,821</u>	<u>\$ 691,064</u>