

UNITED STATES
SECURITIES AND EXCHANGE COMMISSION
WASHINGTON, D.C. 20549

FORM 8-K

CURRENT REPORT

Pursuant to Section 13 or 15(d) of the Securities Exchange Act of 1934

Date of report (Date of earliest event reported): July 31, 2019

PILGRIM'S PRIDE CORPORATION

(Exact Name of registrant as specified in its charter)

Delaware
(State or other jurisdiction of
incorporation or organization)

1-9273
(Commission File Number)

75-1285071
(IRS Employer Identification No.)

1770 Promontory Circle
Greeley CO
(Address of principal executive offices)

80634-9038
(Zip Code)

Registrant's telephone number, including area code: **(970) 506-8000**

Title of each class
Common Stock, Par Value \$0.01

Trading Symbol
PPC

Name of Exchange on Which Registered
The NASDAQ Stock Market LLC

Not Applicable

(Former name or former address, if changed since last report.)

Check the appropriate box below if the Form 8-K filing is intended to simultaneously satisfy the filing obligation of the registrant under any of the following provisions:

- Written communications pursuant to Rule 425 under the Securities Act (17 CFR 230.425)
- Soliciting material pursuant to Rule 14a-12 under the Exchange Act (17 CFR 240.14a-12)
- Pre-commencement communications pursuant to Rule 14d-2(b) under the Exchange Act (17 CFR 240.14d-2(b))
- Pre-commencement communications pursuant to Rule 13e-4(c) under the Exchange Act (17 CFR 240.13e-4(c))

Indicate by check mark whether the registrant is an emerging growth company as defined in as defined in Rule 405 of the Securities Act of 1933 (§230.405 of this chapter) or Rule 12b-2 of the Securities Exchange Act of 1934 (§240.12b-2 of this chapter).

Emerging growth company

If an emerging growth company, indicate by check mark if the registrant has elected not to use the extended transition period for complying with any new or revised financial accounting standards provided pursuant to Section 13(a) of the Exchange Act.

Item 7.01. Regulation FD Disclosure.

Attached hereto as Exhibit 99.1 is an overview of Pilgrim's Pride Corporation to be referenced during the Company's earnings conference call of August 1, 2019.

The information furnished in Item 7.01 and in Exhibit 99.1 shall not be deemed "filed" for purposes of Section 18 of the Securities Exchange Act of 1934, as amended (the "Exchange Act"), or incorporated by reference in any of Pilgrim's Pride Corporation's filings under the Securities Act of 1933, as amended, or the Exchange Act.

Item 9.01 Financial Statements and Exhibits.

[Exhibit 99.1](#) Supplemental Historical Financial Information

SIGNATURE

Pursuant to the requirements of the Securities Exchange Act of 1934, the registrant has duly caused this report to be signed on its behalf by the undersigned hereunto duly authorized.

PILGRIM'S PRIDE CORPORATION

Date: July 31, 2019

/s/ Fabio Sandri
Fabio Sandri
Chief Financial Officer



**Financial Results for
Second Quarter Ended June 30, 2019**

Pilgrim's Pride Corporation
(NASDAQ: PPC)

All about great taste.

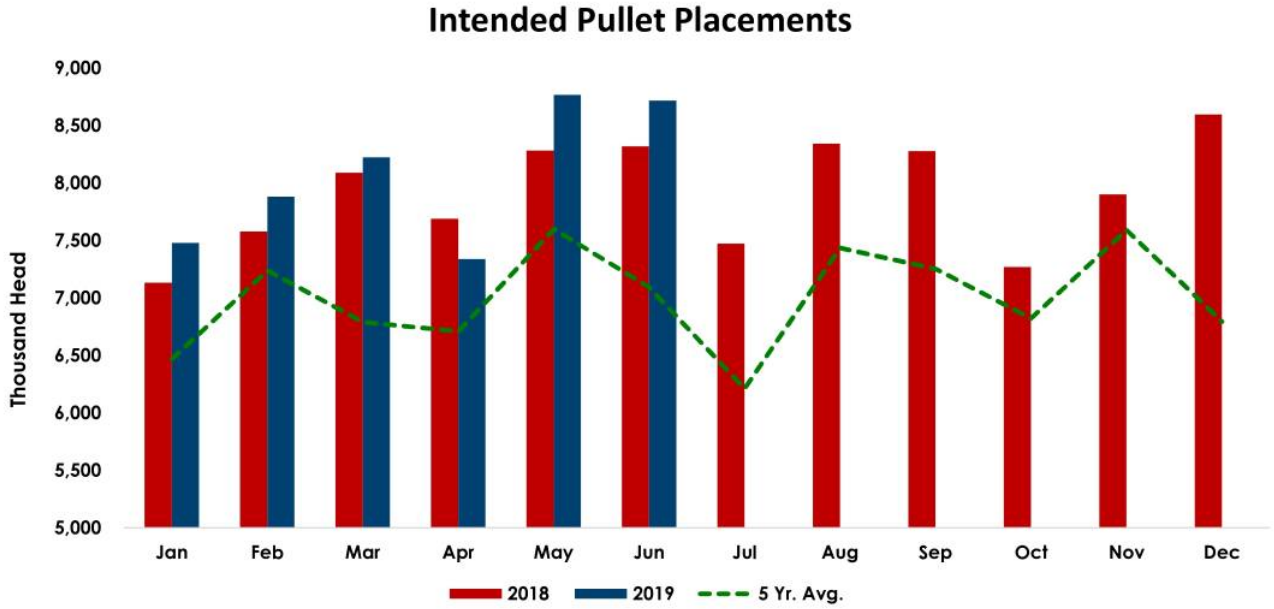
Cautionary Notes and Forward-Looking Statements

- Statements contained in this presentation that share our intentions, beliefs, expectations or predictions for the future, denoted by the words “anticipate,” “believe,” “estimate,” “should,” “expect,” “project,” “plan,” “imply,” “intend,” “foresee” and similar expressions, are forward-looking statements that reflect our current views about future events and are subject to risks, uncertainties and assumptions. Such risks, uncertainties and assumptions include the following matters affecting the chicken industry generally, including fluctuations in the commodity prices of feed ingredients and chicken; actions and decisions of our creditors; our ability to obtain and maintain commercially reasonable terms with vendors and service providers; our ability to maintain contracts that are critical to our operations; our ability to retain management and other key individuals; certain of our reorganization and exit or disposal activities, including selling assets, idling facilities, reducing production and reducing workforce, resulted in reduced capacities and sales volumes and may have a disproportionate impact on our income relative to the cost savings; risk that the amounts of cash from operations together with amounts available under our exit credit facility will not be sufficient to fund our operations; management of our cash resources, particularly in light of our substantial leverage; restrictions imposed by, and as a result of, our substantial leverage; additional outbreaks of avian influenza or other diseases, either in our own flocks or elsewhere, affecting our ability to conduct our operations and/or demand for our poultry products; contamination of our products, which has previously and can in the future lead to product liability claims and product recalls; exposure to risks related to product liability, product recalls, property damage and injuries to persons, for which insurance coverage is expensive, limited and potentially inadequate; changes in laws or regulations affecting our operations or the application thereof; new immigration legislation or increased enforcement efforts in connection with existing immigration legislation that cause our costs of business to increase, cause us to change the way in which we do business or otherwise disrupt our operations; competitive factors and pricing pressures or the loss of one or more of our largest customers; currency exchange rate fluctuations, trade barriers, exchange controls, expropriation and other risks associated with foreign operations; disruptions in international markets and distribution channels; and the impact of uncertainties of litigation as well as other risks described herein and under “Risk Factors” in the Company’s Annual Report on Form 10-K filed with the Securities and Exchange Commission (the “SEC”).
- Actual results could differ materially from those projected in these forward-looking statements as a result of these factors, among others, many of which are beyond our control. In making these statements, we are not undertaking, and specifically decline to undertake, any obligation to address or update each or any factor in future filings or communications regarding our business or results, and we are not undertaking to address how any of these factors may have caused changes to information contained in previous filings or communications. Although we have attempted to list comprehensively these important cautionary risk factors, we must caution investors and others that other factors may in the future prove to be important and affecting our business or results of operations.
- This presentation may include information that may be considered non-GAAP financial information as contemplated by SEC Regulation G, Rule 100, including EBITDA, Adjusted EBITDA, LTM EBITDA, Net Debt, Free Cash Flow, Adjusted EBITDA Margin and others. Accordingly, we have provided tables in the accompanying appendix and in our previous filings with the SEC that reconcile these measures to their corresponding GAAP-based measures and explain why these measures are useful to investors, which can be obtained from the Consolidated Statements of Income provided with our previous filings with the SEC. Our method of computation may or may not be comparable to other similarly titled measures used in filings with the SEC by other companies. See the consolidated statements of income and consolidated statements of cash flows included in our financial statements..



All about great taste.

Pullet Placement Growth In-line with Expected New Capacity



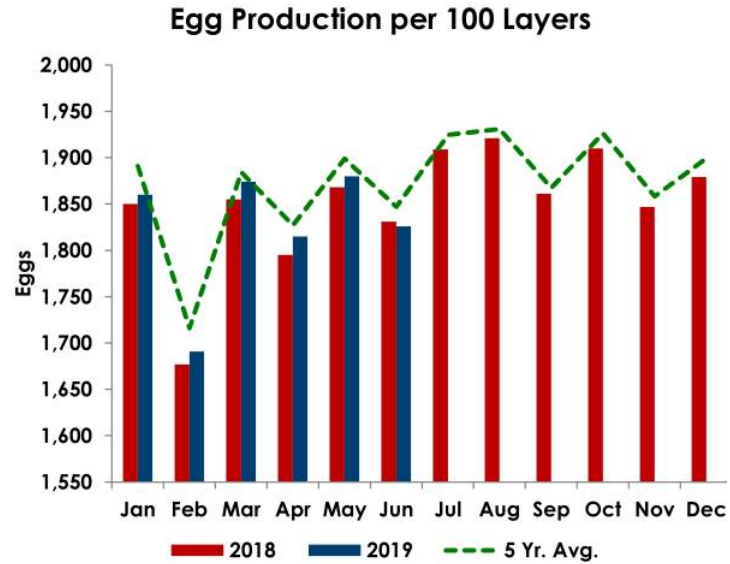
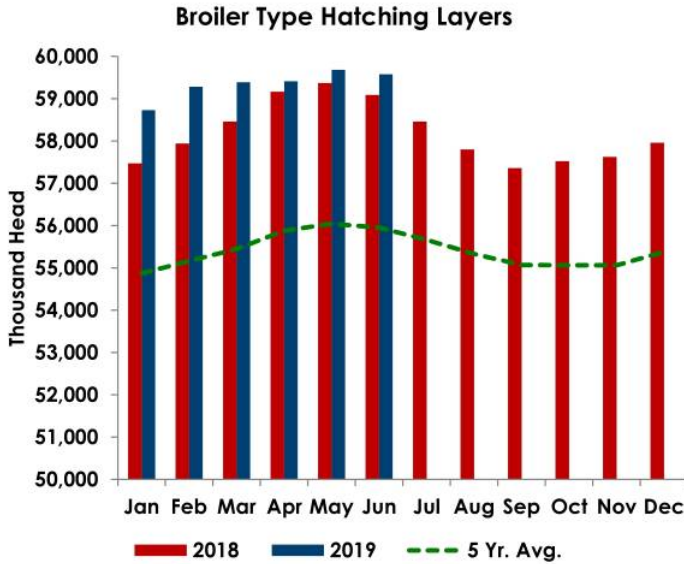
- Trailing 8-Month placements average 3.6% above year prior to accommodate oncoming plants in late 2019.



All about great taste.

Source: USDA

Breeder Growth Has Slowed and Egg Production Remains Below 5 Year Average



- Growth in hatching layers has been supportive of new capacity.
- After significant Y/Y growth in Q1, hatching layer growth has slowed.
- Egg production marginally improved for most of 2019, but remains below the 5-yr avg.

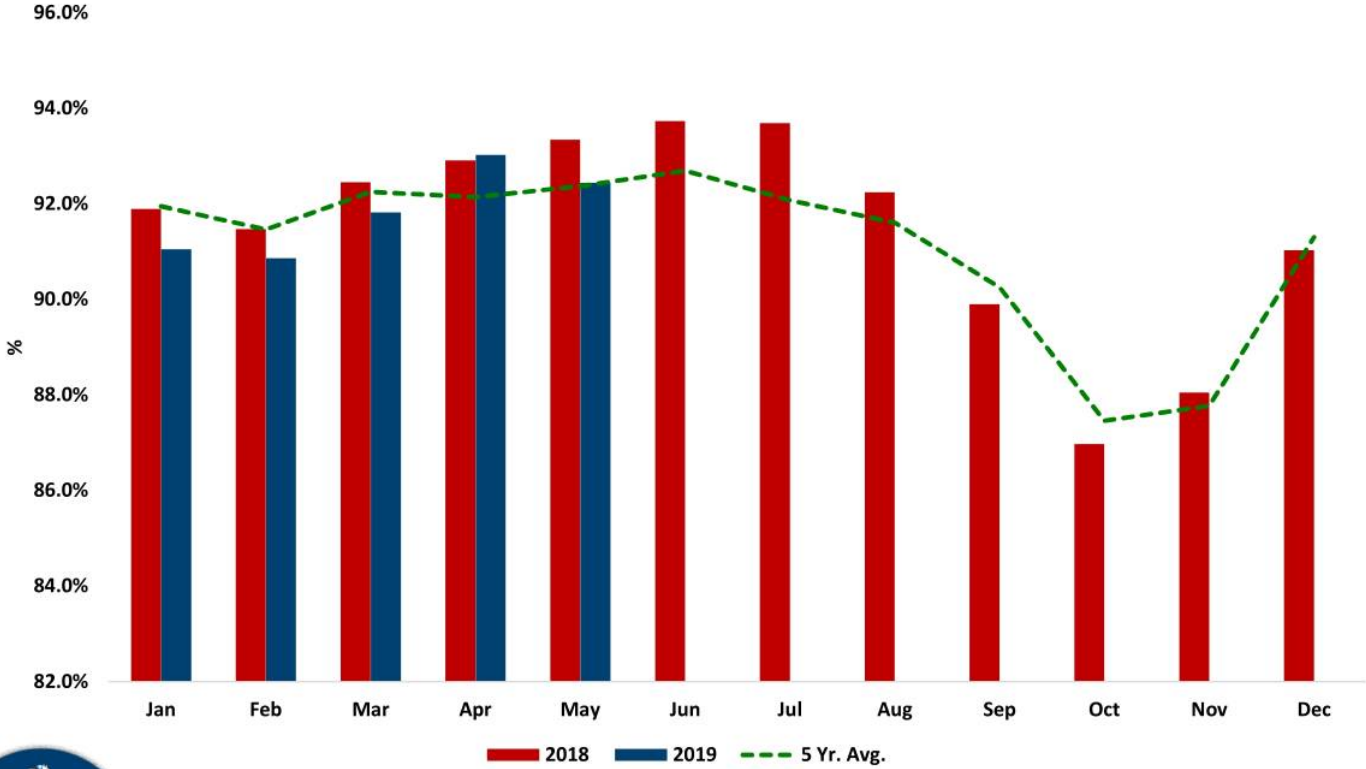


All about great taste.

Source: USDA

Hatchery Utilization Remains In Line With 5 Year Average

Hatchery Utilization

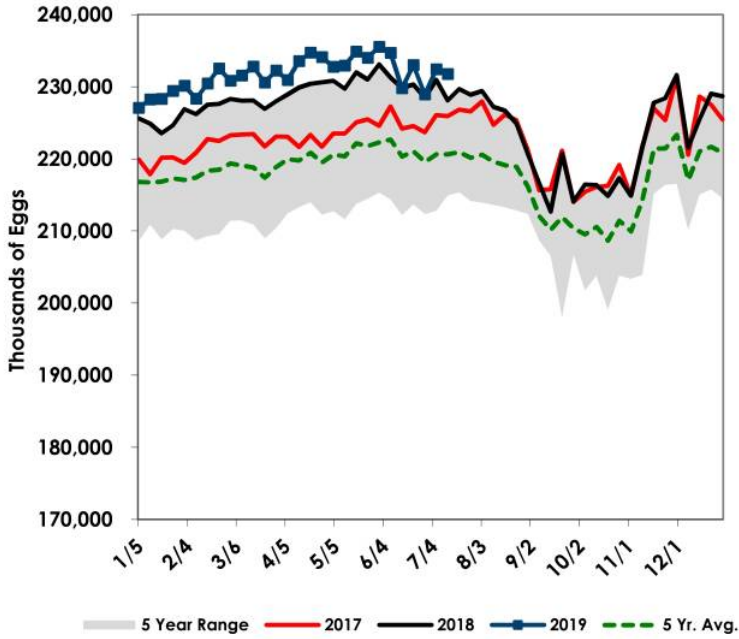


All about great taste.

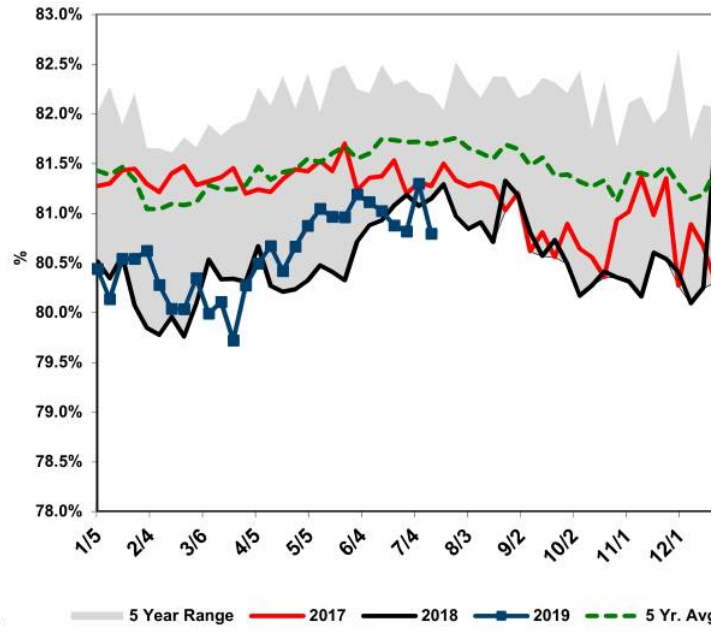
Source: Agristats

Egg Sets Up +1.3% YTD, Hatchability Remains Challenged

Chicken Egg Sets by Week - USDA



Chicken Hatchability by Week - USDA

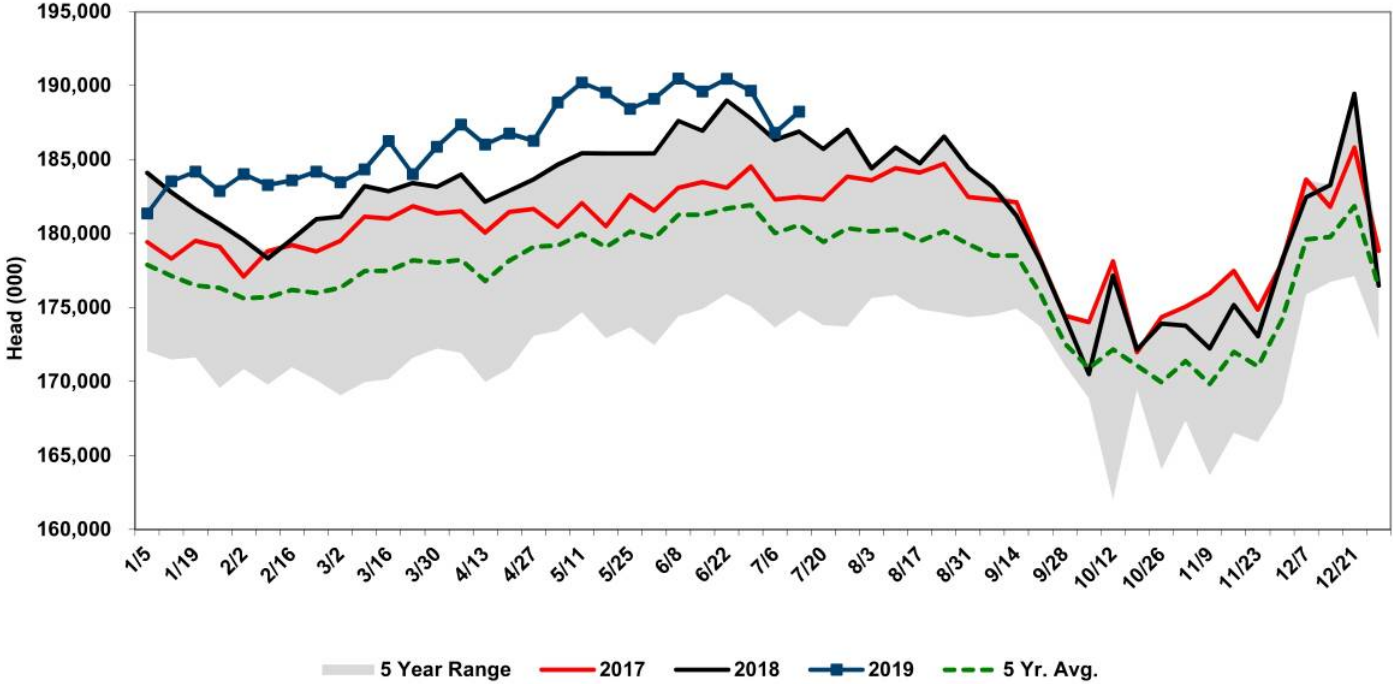


All about great taste.

Source: USDA

Chick Placements Up +1.4% YTD

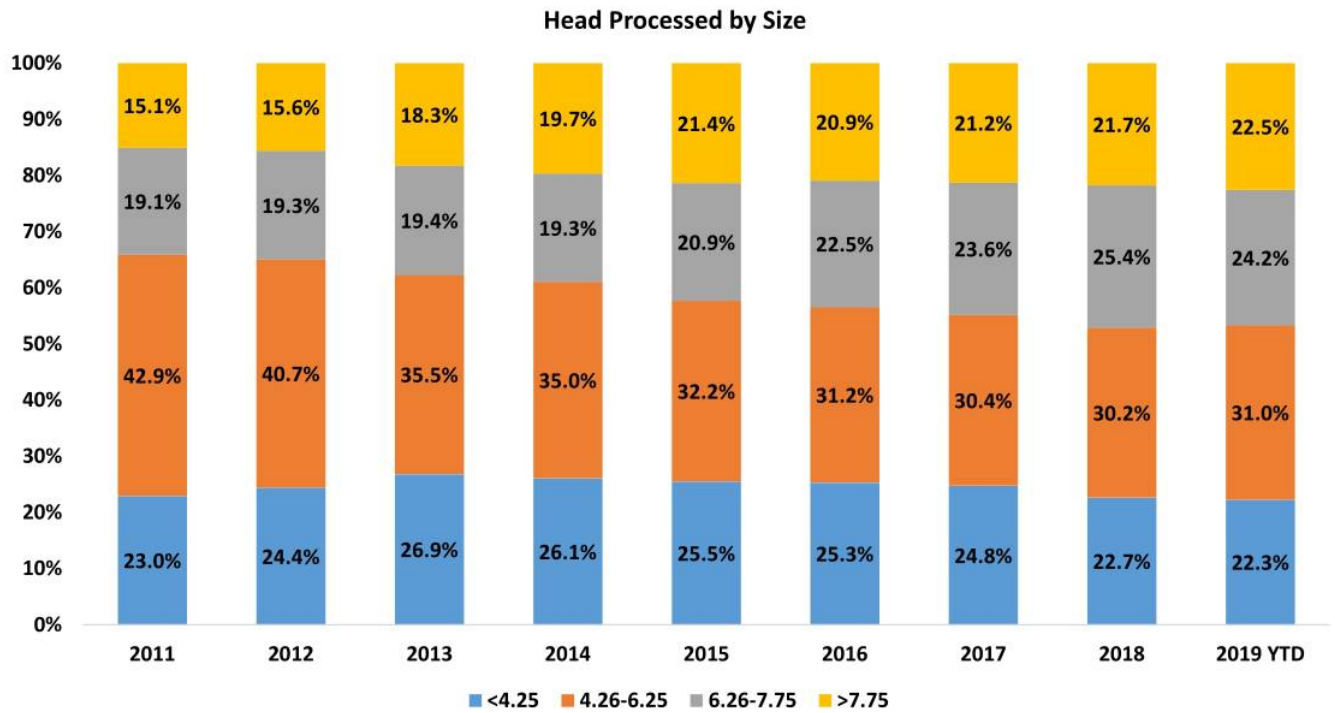
Chicken Broiler Placed by Week- USDA



All about great taste.

Source: USDA

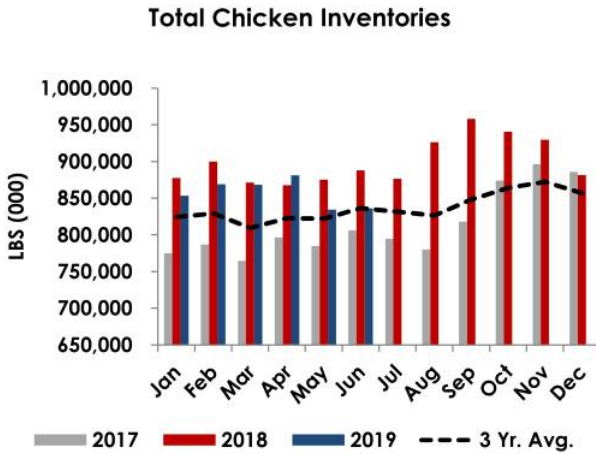
Bigger Bird Categories Continuing to Grow Share



All about great taste.

Source: USDA

LQ and Wings Driving Total Cold Storage Inventories Lower



Frozen Chicken Inventory (000 LBS)					
Part	Jun-18	May-19	Jun-19	YOY Change	MOM Change
Broilers	15,370	19,583	21,490	▲ 39.8%	▲ 9
Hens	3,907	6,213	7,260	▲ 85.8%	▲ 16
Breast Meat	181,547	173,077	177,728	▼ -2.1%	▲ 2
Drumsticks	36,304	35,408	36,837	▲ 1.5%	▲ 4
LQ	85,540	50,613	54,067	▼ -36.8%	▲ 6
Legs	17,291	11,952	11,350	▼ -34.4%	▼ -5
Thighs	10,214	10,335	8,707	▼ -14.8%	▼ -15
Thigh Meat	21,872	39,812	39,509	▲ 80.6%	▼ -0
Wings	81,488	59,475	62,947	▼ -22.8%	▲ 5
Paws and Feet	36,553	24,107	25,981	▼ -28.9%	▲ 7
Other	397,898	403,723	390,344	▼ -1.9%	▼ -3
Total Chicken	887,984	834,298	836,220	▼ -5.8%	0

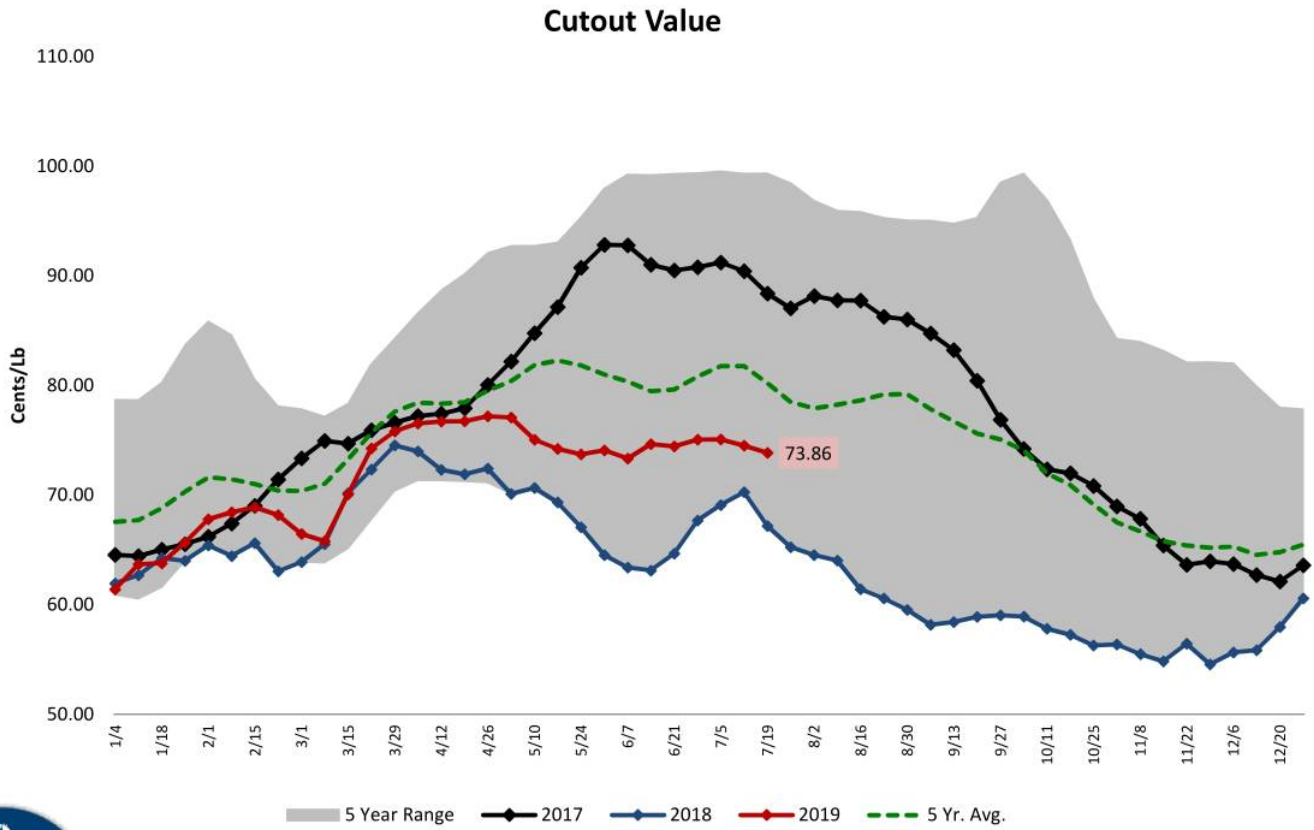
- Total inventories saw little MOM change, but remain below 2018 levels.
- Breast meat inventories are still trending near three year average, but saw counter-seasonal inventory build in June.
- LQ inventories remain significantly below historical norms.
- Wing inventories continue to trend in line with 2017.



All about great taste.

Source: USDA

Cutout Stable in Q2, Above 2018 Level

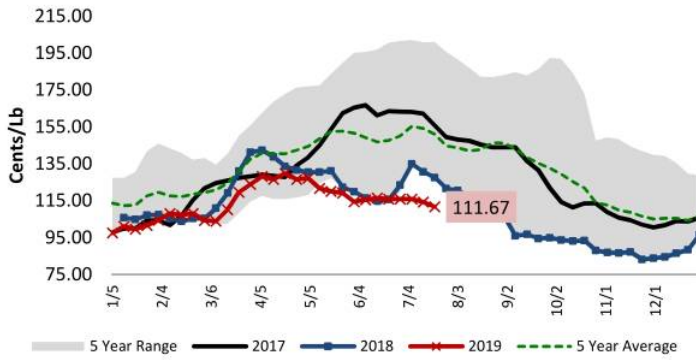


All about great taste.

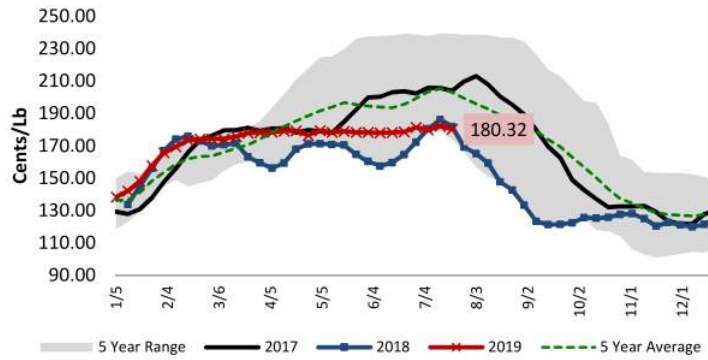
Source: PPC, EMI

Strength in Wings and LQs Continue to Support Cutout, Despite Boneless Breast Lagging

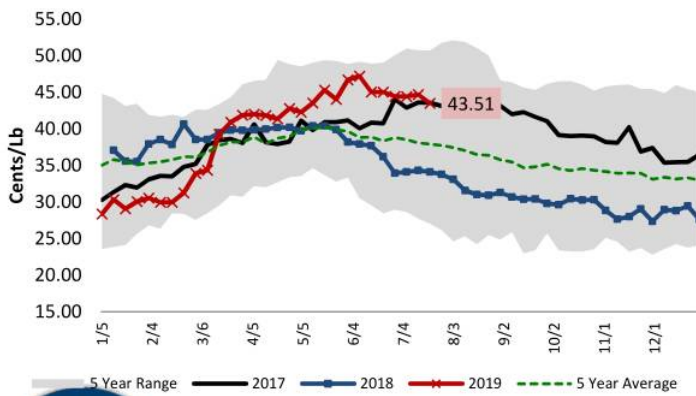
USDA Boneless/Skinless Breast NE



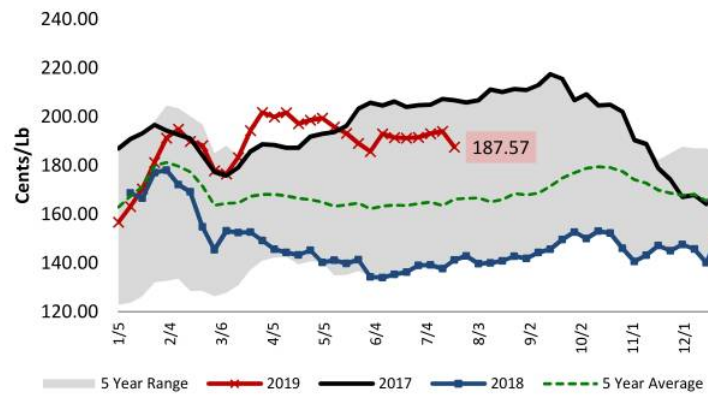
USDA Tenders NE



USDA Leg Quarters NE



USDA Whole Wings NE

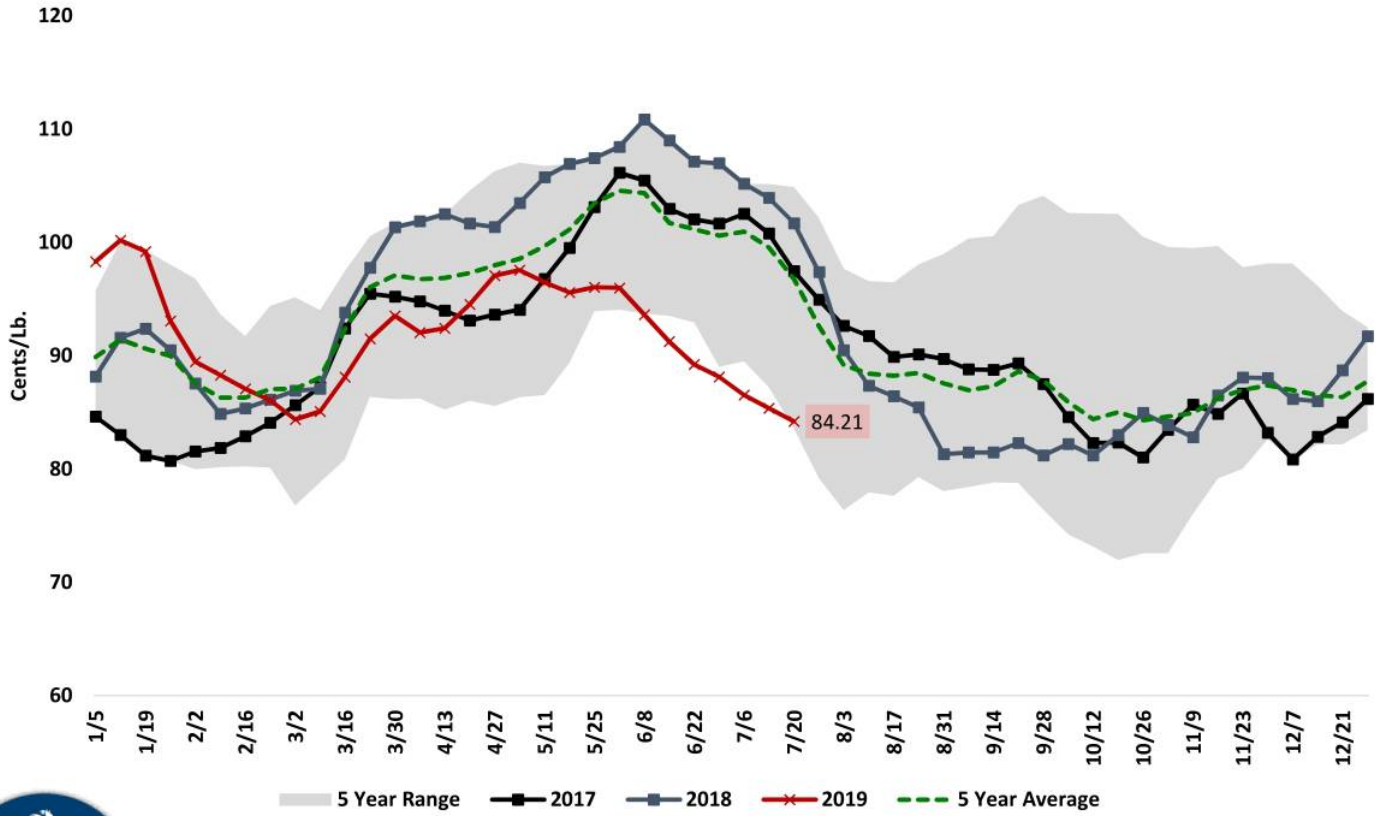


All about great taste.

Source: USDA

Seasonal Decline Started Early for WOGs, But Still Close to 5 Year Range

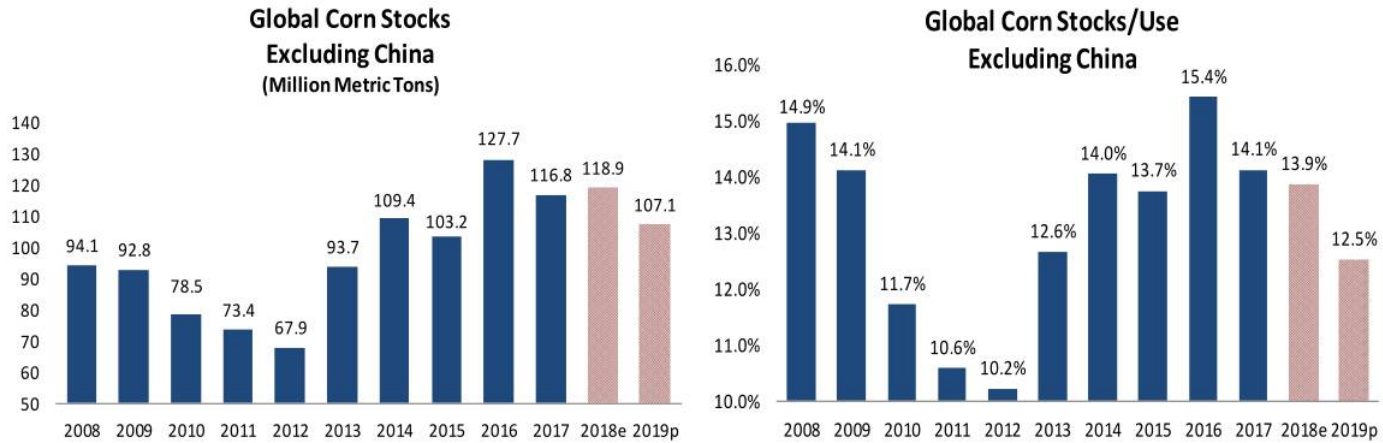
EMI WOG 2.5-4.0 LBS



All about great taste.

Source: EMI

Corn Stocks Projected to Decrease in '19



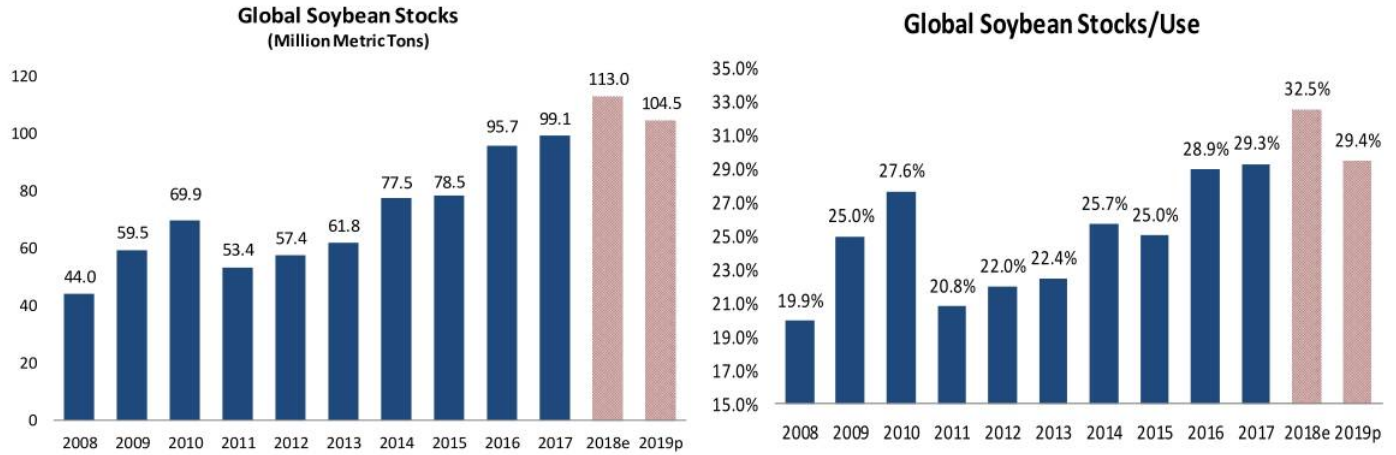
- Wet and late start to corn planting this summer impacting, plenty of supply remains available.
- Stocks/use projected to tighten in 2019.



All about great taste.

Source: USDA

Global Soybean Inventories Remain High



- Stocks are projected to decline from record highs in '18 due to late planting start, however plenty of stocks remain available.
- Record global soybean stocks has kept key export countries competitive, contributing to a large US soybean supply.



All about great taste.

Source: USDA

Second Quarter 2019 Financial Review

Main Indicators (\$M)	Q2-19	Q2-18
Net Revenue	2,843.1	2,836.7
Gross Profit	367.9	274.2
SG&A	88.3	89.1
Operating Income	279.6	185.1
Net Interest	30.2	35.4
Net Income	170.1	106.5
Earnings Per Share (EPS)	0.68	0.43
Adjusted EBITDA*	349.3	259.3
<i>Adjusted EBITDA Margin*</i>	12.3%	9.2%

* This is a non-GAAP measurement considered by management to be useful in understanding our results. Please see the appendix and most recent SEC financial filings for definition of this measurement and reconciliation to GAAP.

- U.S.: Commodity recovered Y/Y , PF solid; MX: Better supply/demand from more favorable growing conditions and less pork imports; UK/Europe: Pricing model adjustments and operational improvements generated higher profits.
- SG&A lower due to realized synergies despite more brand investments in U.S. and MX.
- Adjusted Q2-19 EBITDA reflects portfolio, Key Customer strategy, and geographical diversification.

In \$M	U.S.	EU	MX
Net Revenue	1,917.0	535.9	390.2
Operating Income	187.0	24.2	68.4
<i>Operating Income Margin</i>	9.8%	4.5%	17.5%

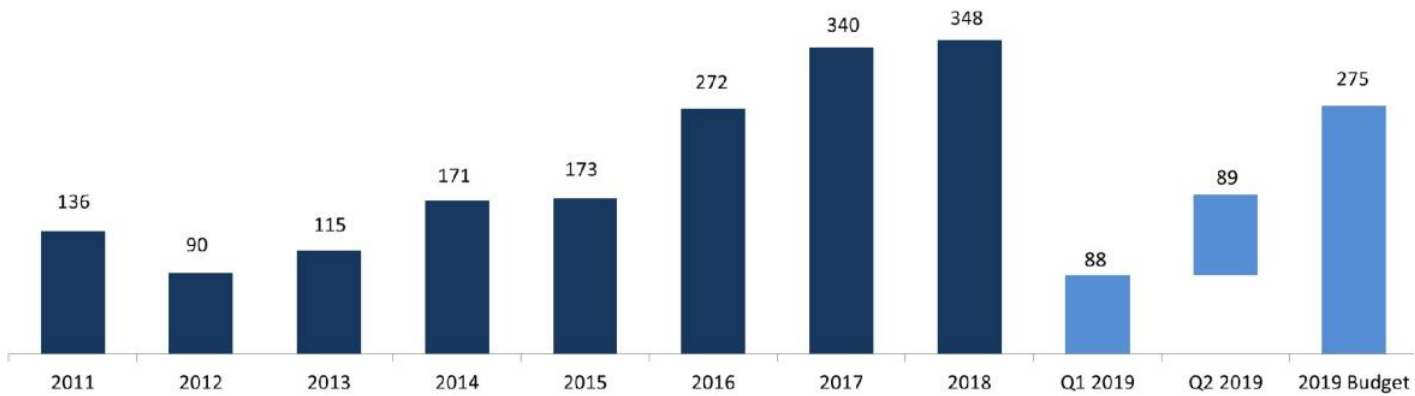


All about great taste.

Source: PPC

Fiscal Year 2019 Capital Spending

Capex (US\$M)



- Strong Free Cash Flow generation has enabled us to direct more capital spending towards identified projects with rapid payback and structural projects.
- New strategic projects will support key customers growth and de-emphasize our exposure to commodity markets by yielding a more differentiated portfolio.



All about great taste.

Source: PPC

Investor Relations Contact

Investor Relations: **Dunham Winoto**
Director, Investor Relations

E-mail: **IRPPC@pilgrims.com**

Address: **1770 Promontory Circle**
Greeley, CO 80634 USA

Website: **www.pilgrims.com**



All about great taste.

APPENDIX



All about great taste.

Appendix: EBITDA Reconciliation

"EBITDA" is defined as the sum of net income (loss) plus interest, taxes, depreciation and amortization. "Adjusted EBITDA" is calculated by adding to EBITDA certain items of expense and deducting from EBITDA certain items of income that we believe are not indicative of our ongoing operating performance consisting of: (i) income (loss) attributable to non-controlling interests, (ii) restructuring charges, (iii) reorganization items, (iv) losses on early extinguishment of debt and (v) foreign currency transaction losses (gains). EBITDA is presented because it is used by management and we believe it is frequently used by securities analysts, investors and other interested parties, in addition to and not in lieu of results prepared in conformity with accounting principles generally accepted in the US ("GAAP"), to compare the performance of companies. We believe investors would be interested in our Adjusted EBITDA because this is how our management analyzes EBITDA. The Company also believes that Adjusted EBITDA, in combination with the Company's financial results calculated in accordance with GAAP, provides investors with additional perspective regarding the impact of certain significant items on EBITDA and facilitates a more direct comparison of its performance with its competitors. EBITDA and Adjusted EBITDA are not measurements of financial performance under GAAP. They should not be considered as an alternative to cash flow from operating activities or as a measure of liquidity or an alternative to net income as indicators of our operating performance or any other measures of performance derived in accordance with GAAP.

PILGRIM'S PRIDE CORPORATION
Reconciliation of Adjusted EBITDA
(Unaudited)

	Thirteen Weeks Ended		Twenty-Six Weeks Ended	
	June 30, 2019	July 1, 2018	June 30, 2019	July 1, 2018
	(In thousands)			
Net income	\$ 170,080	\$ 106,344	\$ 254,205	\$ 225,568
Add:				
Interest expense, net	33,594	35,433	67,156	84,143
Income tax expense	75,547	38,522	95,963	75,519
Depreciation and amortization	71,348	68,643	138,530	136,087
EBITDA	347,125	248,942	549,070	521,317
Add:				
Foreign currency transaction losses	2,260	5,630	4,896	3,909
Acquisition charges	—	125	—	304
Derivative loss	—	—	—	—
Restructuring activity	(43)	1,135	(70)	1,924
Other nonrecurring losses and expenses	—	3,298	—	3,298
Minus:				
Net income (loss) attributable to noncontrolling interest	12	(197)	126	(391)
Adjusted EBITDA	\$ 349,330	\$ 259,327	\$ 553,770	\$ 531,143

Source: PPC



All about great taste.

Appendix: Reconciliation of LTM EBITDA

The summary unaudited consolidated income statement data for the twelve months ended June 30, 2019 (the LTM Period) have been calculated by subtracting the applicable unaudited consolidated income statement data for the six months ended July 1, 2018 from the sum of (1) the applicable audited consolidated income statement data for the year ended December 30, 2018 and (2) the applicable audited consolidated income statement data for the six months ended June 30, 2019.

PILGRIM'S PRIDE CORPORATION Reconciliation of LTM Adjusted EBITDA

(Unaudited)	Thirteen Weeks Ended September 30, 2018	Thirteen Weeks Ended December 30, 2018	Thirteen Weeks Ended March 31, 2019	Thirteen Weeks Ended June 30, 2019	LTM Ended June 30, 2019
	(In thousands)				
Net income	\$ 29,463	\$ (8,227)	\$ 84,125	\$ 170,080	\$ 275,441
Add:					
Interest expense, net	31,093	33,765	30,222	30,150	125,230
Income tax expense	30,848	(20,944)	20,416	75,547	105,867
Depreciation and amortization	71,027	66,975	67,182	71,348	276,532
EBITDA	162,431	71,569	201,945	347,125	783,070
Add:					
Foreign currency transaction losses (gains)	(6,711)	19,962	2,636	2,260	18,147
Acquisition charges	16	—	—	—	16
Restructuring activities	257	2,584	(27)	(43)	2,771
Other nonrecurring losses and expenses	164	16,023	—	—	16,187
Minus:					
Net income (loss) attributable to noncontrolling interest	153	(903)	114	12	(624)
Adjusted EBITDA	\$ 156,004	\$ 111,041	\$ 204,440	\$ 349,330	\$ 820,815



All about great taste.

Source: PPC

Appendix: EBITDA Margin Reconciliation

EBITDA margins have been calculated by taking the relevant unaudited EBITDA figures, then dividing by Net Revenue for the applicable period.

PILGRIM'S PRIDE CORPORATION Reconciliation of EBITDA Margin (Unaudited)

	Thirteen Weeks Ended		Twenty-Six Weeks Ended		Thirteen Weeks Ended		Twenty-Six Weeks Ended	
	June 30, 2019	July 1, 2018	June 30, 2019	July 1, 2018	June 30, 2019	July 1, 2018	June 30, 2019	July 1, 2018
	(In thousands)							
Net income	\$ 170,080	\$ 106,344	\$ 254,205	\$ 225,568	5.98 %	3.75 %	4.57 %	4.04 %
Add:								
Interest expense, net	30,150	35,433	60,372	84,143	1.06 %	1.25 %	1.08 %	1.51 %
Income tax expense	75,547	38,522	95,963	75,519	2.66 %	1.36 %	1.72 %	1.35 %
Depreciation and amortization	71,348	68,643	138,530	136,087	2.51 %	2.42 %	2.49 %	2.44 %
EBITDA	347,125	248,942	549,070	521,317	12.21 %	8.79 %	9.86 %	9.34 %
Add:								
Foreign currency transaction losses	2,260	5,630	4,896	3,909	0.08 %	0.20 %	0.09 %	0.07 %
Acquisition charges	—	125	—	304	— %	— %	— %	0.01 %
Restructuring activity	(43)	1,135	(70)	1,924	— %	0.04 %	— %	0.03 %
Other nonrecurring losses and expenses	—	3,298	—	3,298	— %	0.12 %	— %	0.06 %
Minus:								
Net income (loss) attributable to noncontrolling interest	12	(197)	126	(391)	— %	(0.01)%	— %	(0.01)%
Adjusted EBITDA	\$ 349,330	\$ 259,327	\$ 553,770	\$ 531,143	12.29 %	9.15 %	9.95 %	9.51 %
Net sales	\$ 2,843,085	\$ 2,836,713	\$ 5,567,760	\$ 5,583,391	\$ 2,843,085	\$ 2,836,713	\$ 5,567,760	\$ 5,583,391

Source: PPC



All about great taste.

Appendix: Reconciliation of Adjusted Net Income

A reconciliation of net income (loss) attributable to Pilgrim's Pride Corporation per common diluted share to adjusted net income (loss) attributable to Pilgrim's Pride Corporation per common diluted share is as follows:

PILGRIM'S PRIDE CORPORATION Reconciliation of Adjusted Earnings (Unaudited)

	Thirteen Weeks Ended		Twenty-Six Weeks Ended	
	June 30, 2019	July 1, 2018	June 30, 2019	July 1, 2018
	(In thousands, except per share data)			
Net income attributable to Pilgrim's Pride Corporation	\$ 170,068	\$ 106,541	\$ 254,079	\$ 225,959
Adjustments, net of tax:				
Loss on early extinguishment of debt	—	1,513	—	8,823
Acquisition charges and restructuring activities	(33)	954	(53)	1,686
Foreign currency transaction losses	1,710	4,260	3,704	2,957
Income before loss on early extinguishment of debt, acquisition charges and restructuring activities, and foreign currency transaction losses	\$ 171,745	\$ 113,268	\$ 257,730	\$ 239,425
Weighted average diluted shares of common stock outstanding	249,636	249,057	249,603	249,025
Income before loss on early extinguishment of debt, acquisition and restructuring activities and foreign currency transaction losses per common diluted share	\$ 0.69	\$ 0.45	\$ 1.03	\$ 0.96



All about great taste.

Source: PPC

Appendix: Adjusted EPS Bridge

A reconciliation of GAAP earnings per share (EPS) to adjusted earnings per share (EPS) is as follows:

PILGRIM'S PRIDE CORPORATION
Reconciliation of GAAP EPS to Adjusted EPS
(Unaudited)

	Thirteen Weeks Ended		Twenty-Six Weeks Ended	
	June 30, 2019	July 1, 2018	June 30, 2019	July 1, 2018
	(In thousands, except per share data)			
GAAP EPS	\$ 0.68	\$ 0.43	\$ 1.02	\$ 0.91
Adjustments, net of tax:				
Loss on early extinguishment of debt	—	0.01	—	0.04
Foreign currency transaction losses	0.01	0.01	0.01	0.01
Adjusted EPS	<u>\$ 0.69</u>	<u>\$ 0.45</u>	<u>\$ 1.03</u>	<u>\$ 0.96</u>
Weighted average diluted shares of common stock outstanding	249,636	249,057	249,603	249,025



All about great taste.

Source: PPC

Appendix: Segment and Geographic Data

PILGRIM'S PRIDE CORPORATION
Supplementary Selected Segment and Geographic Data
(Unaudited)

	Thirteen Weeks Ended		Twenty-Six Weeks Ended	
	June 30, 2019	July 1, 2018	June 30, 2019	July 1, 2018
(In thousands)				
Sources of net sales by country of origin:				
US	\$ 1,916,954	\$ 1,899,435	\$ 3,800,544	\$ 3,740,540
Europe	535,902	563,102	1,050,865	1,107,402
Mexico	390,229	374,176	716,351	735,449
Total net sales	\$ 2,843,085	\$ 2,836,713	\$ 5,567,760	\$ 5,583,391
Sources of cost of sales by country of origin:				
US	\$ 1,670,384	\$ 1,745,511	\$ 3,383,803	\$ 3,404,245
Europe	492,386	513,991	977,764	1,015,559
Mexico	312,475	302,973	619,438	601,708
Intersegment transactions, net	(24)	16	(48)	(8)
Total cost of sales	\$ 2,475,221	\$ 2,562,491	\$ 4,980,957	\$ 5,021,504
Sources of gross profit by country of origin:				
US	\$ 246,570	\$ 153,924	\$ 416,741	\$ 336,295
Europe	43,516	49,111	73,101	91,843
Mexico	77,754	71,203	96,913	133,741
Intersegment transactions, net	24	(16)	48	8
Total gross profit	\$ 367,864	\$ 274,222	\$ 586,803	\$ 561,887
Sources of operating income by country of origin:				
US	\$ 186,960	\$ 99,469	\$ 301,800	\$ 226,755
Europe	24,194	23,662	36,908	45,075
Mexico	68,372	61,997	77,836	114,867
Intersegment transactions, net	24	(16)	48	8
Total operating income	\$ 279,550	\$ 185,112	\$ 416,592	\$ 386,705



All about great taste.

Source: PPC

